

ANNUAL MEETING OF THE INTERNATIONAL SCIENTIFIC COMMITTEE ON HISTORIC CITIES, TOWNS AND VILLAGES  
(CIVVIH) – ICOMOS

3<sup>RD</sup> CONFERENCE OF THE SUB-COMMITTEE FOR CENTRAL AND EASTERN EUROPE

---

# KULDĪGA – UNESCO WH. LIST THE HISTORY OF THE CITY'S DEVELOPMENT AND ITS OUTSTANDING UNIVERSAL VALUES

## STRATEGIES FOR ENHANCING HISTORIC CITIES' RESILIENCE TO DISASTERS

**Dr. arch. Jana Jākobsone**

The chair of organizational committee

ICOMOS Latvia

CIVVIH expert member

WHS Old town of Kuldiga site manager

---

SEPTEMBER 10-15, 2025

KULDIGA, LATVIA



# KULDĪGA REGION

## KULDĪGA TOWN

**Founded in**

1242

**Area**

13,2 km<sup>2</sup>

**Population**

10 109

## KULDĪGA COUNTY

**Founded in**

2021

**Area**

2505 km<sup>2</sup>

**Population**

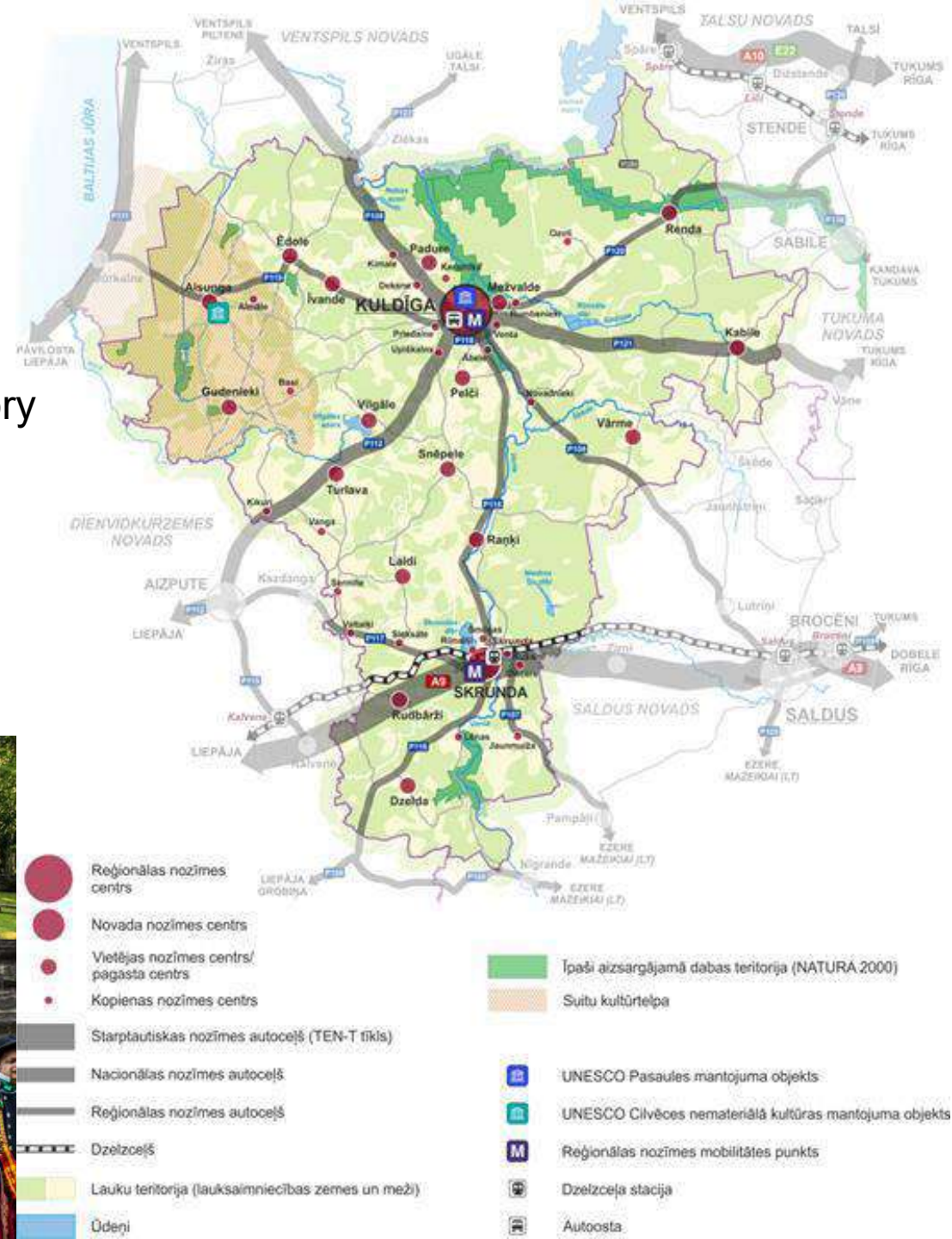
28 471





# NATURE AND CULTURAL HERITAGE IN THE COUNTY

- Natura 2000 areas
- Cultural monuments: urban planning, architecture, art, history
- Forests and countryside
- Rivers, lakes, ponds
- Historic urban landscapes
- Intangible cultural heritage







# KULDĪGA IS INSCRIBED INTO THE UNESCO WORLD HERITAGE LIST

SINCE SEPTEMBER 17, 2023



# UNESCO WORLD HERITAGE LIST INSCRIPTION

Name: **Old town of Kuldīga**  
Date of Inscription: **2023**  
Criterion: **(v)**  
Property: **84.33 ha**  
Buffer zone: **88.85 ha**  
Location: **N56 58 3.9 E21 58 17.5**

Attribute groups: **LANDSCAPE SETTING**

**URBAN LAYOUT**

**ARCHITECTURE AND BUILDING FABRIC**

**CRAFTSMANSHIP**







## FORMULATION AND JUSTIFICATION OF OUTSTANDING UNIVERSAL VALUE (OUV)

---

Located in the western part of Latvia, the town of Kuldīga is an **exceptionally well-preserved example of a traditional urban settlement**, which developed from a small medieval hamlet into an important **administrative centre of the Duchy of Courland and Semigallia between the 16th and 18th centuries**. The town structure of Kuldīga has largely retained the **street layout** of that period, and includes **traditional log architecture** as well as foreign-influenced styles that illustrate the rich exchange between local and travelling craftspeople from around the Baltic Sea. The architectural influences and craftsmanship traditions introduced during the period of the Duchy endured well into the 19th century.



# HISTORICAL DEVELOPMENT

The OUV of the property focuses on Kuldīga as an example of a traditional Baltic settlement and its development from the 13th until the early 20th century.

Some of the central developments include:

- **13<sup>th</sup> - 15<sup>th</sup> century:**

Medieval hamlet of vernacular architecture from local materials

- **16<sup>th</sup>-18<sup>th</sup> century:**

Administrative center of the Duchy of Courland Semigallia, introducing new building techniques and materials

- **19<sup>th</sup> – 20<sup>th</sup> century:**

Part of the Russian Empire, increasing influence of Art Deco style

- **21<sup>st</sup> century:**

First independence of Latvia





**Figure 2.** The development of the castle territory east of the existing village in the 13th century

**Figure 4.** The Western expansion of Kuldīga in the 17th century.





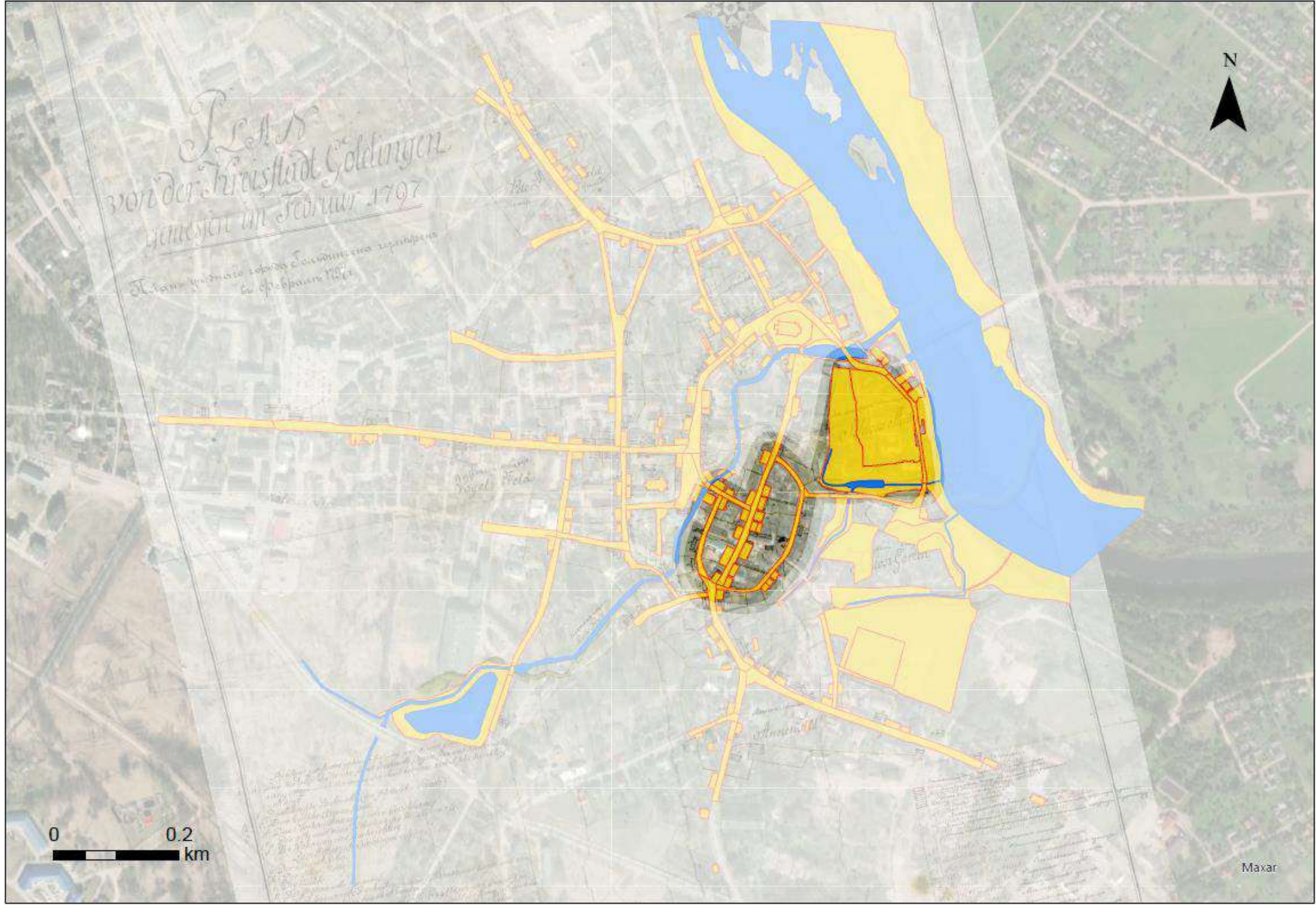
**Figure 1.** Kuldīga in the 11th century

**Figure 2.** The development of the castle territory east of the existing village in the 13th century

**Figure 3.** The expansion of Kuldīga to the north of Alekšupīte river in the 16th century.

**Figure 4.** The Western expansion of Kuldīga in the 17th century.

**Figure 5.** The expansion of Kuldīga on the outskirts of the town in direction of surrounding towns in the 18th century.





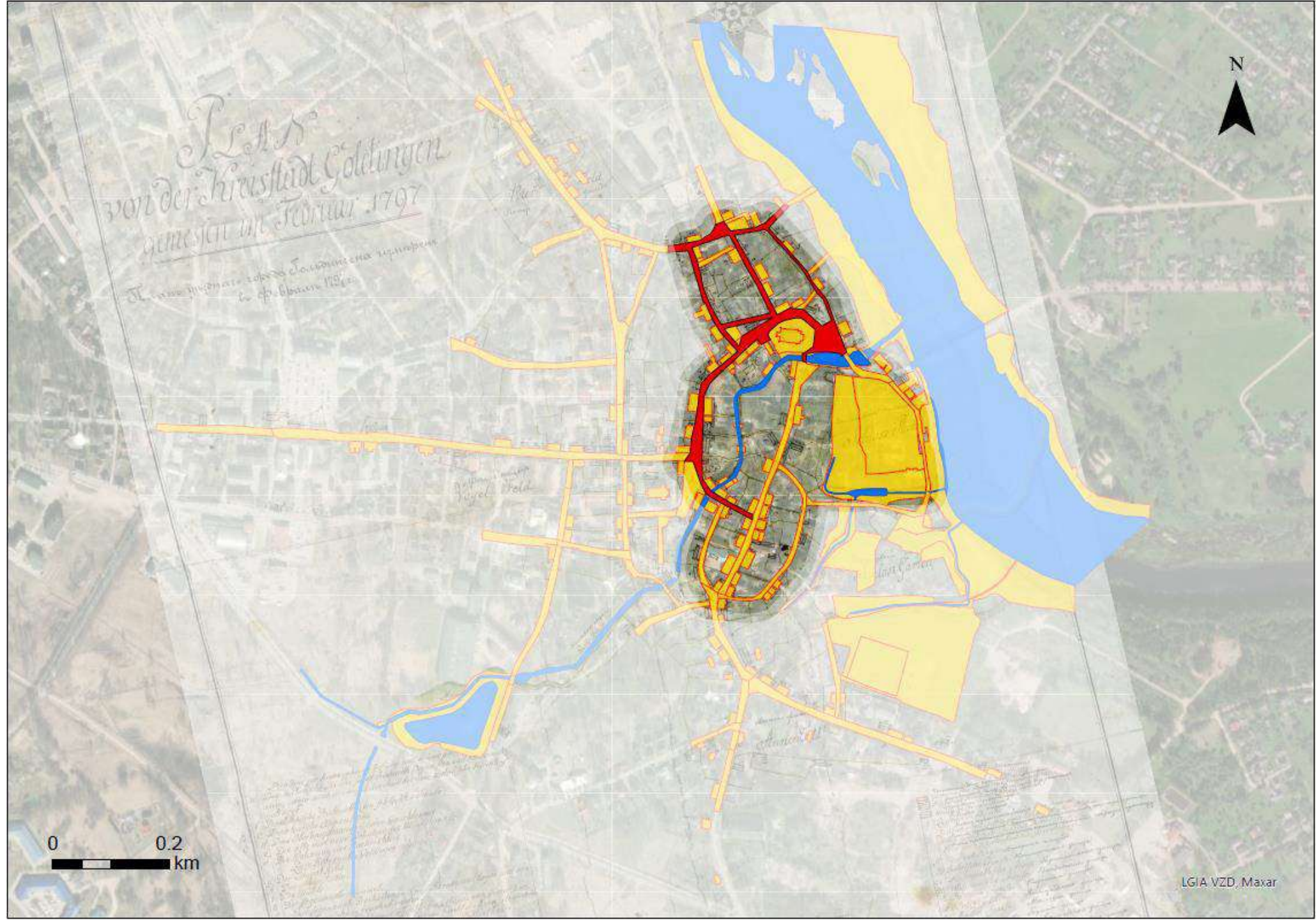
**Figure 1.** Kuldīga in the 11th century

**Figure 2.** The development of the castle territory east of the existing village in the 13th century

**Figure 3.** The expansion of Kuldīga to the north of Alekšupīte river in the 16th century.

**Figure 4.** The Western expansion of Kuldīga in the 17th century.

**Figure 5.** The expansion of Kuldīga on the outskirts of the town in direction of surrounding towns in the 18th century.





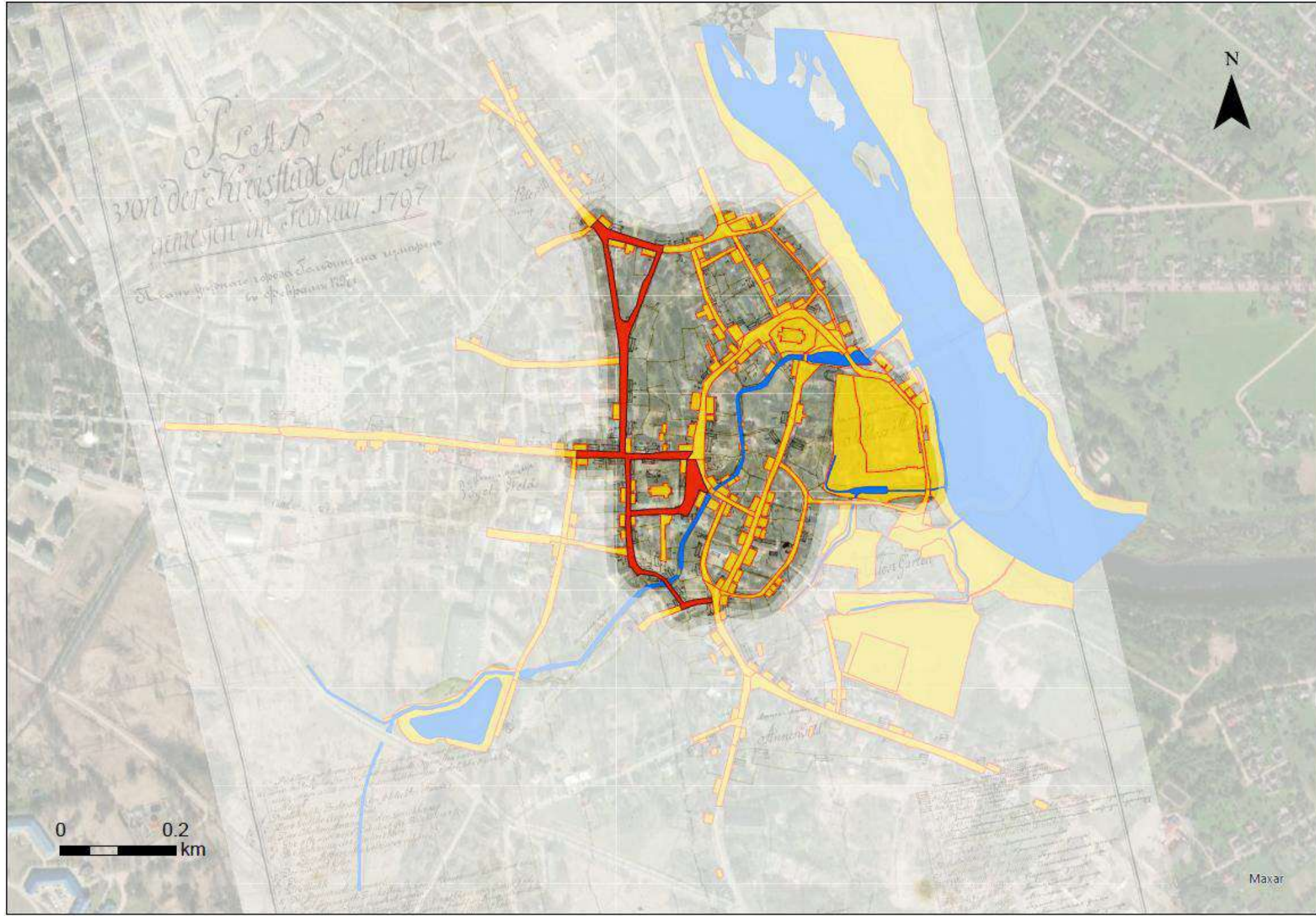
**Figure 1.** Kuldīga in the 11th century

**Figure 2.** The development of the castle territory east of the existing village in the 13th century

**Figure 3.** The expansion of Kuldīga to the north of Alekšupīte river in the 16th century.

**Figure 4.** The Western expansion of Kuldīga in the 17th century.

**Figure 5.** The expansion of Kuldīga on the outskirts of the town in direction of surrounding towns in the 18th century.





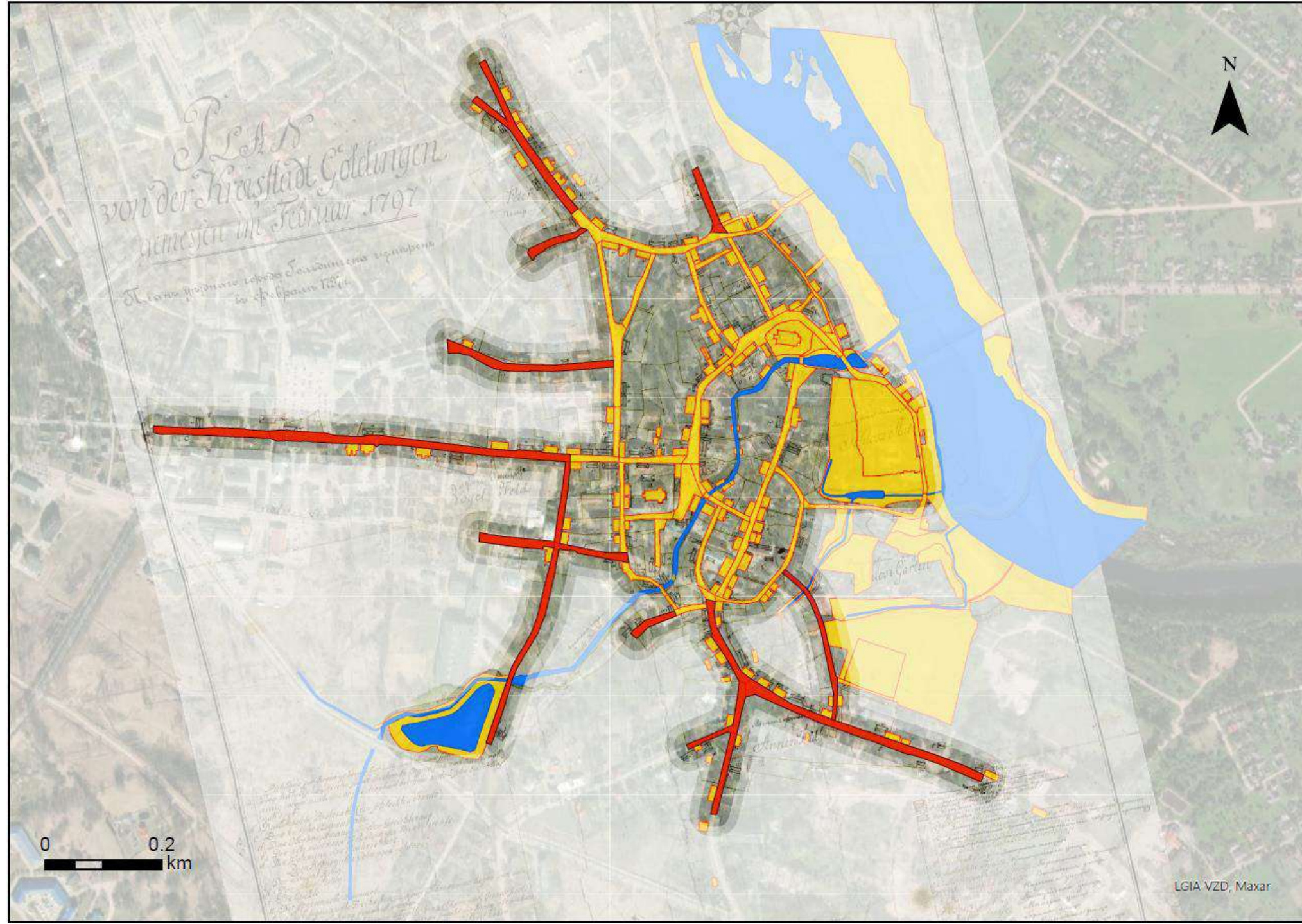
**Figure 1.** Kuldīga in the 11th century

**Figure 2.** The development of the castle territory east of the existing village in the 13th century

**Figure 3.** The expansion of Kuldīga to the north of Alekšupīte river in the 16th century.

**Figure 4.** The Western expansion of Kuldīga in the 17th century.

**Figure 5.** The expansion of Kuldīga on the outskirts of the town in direction of surrounding towns in the 18th century.

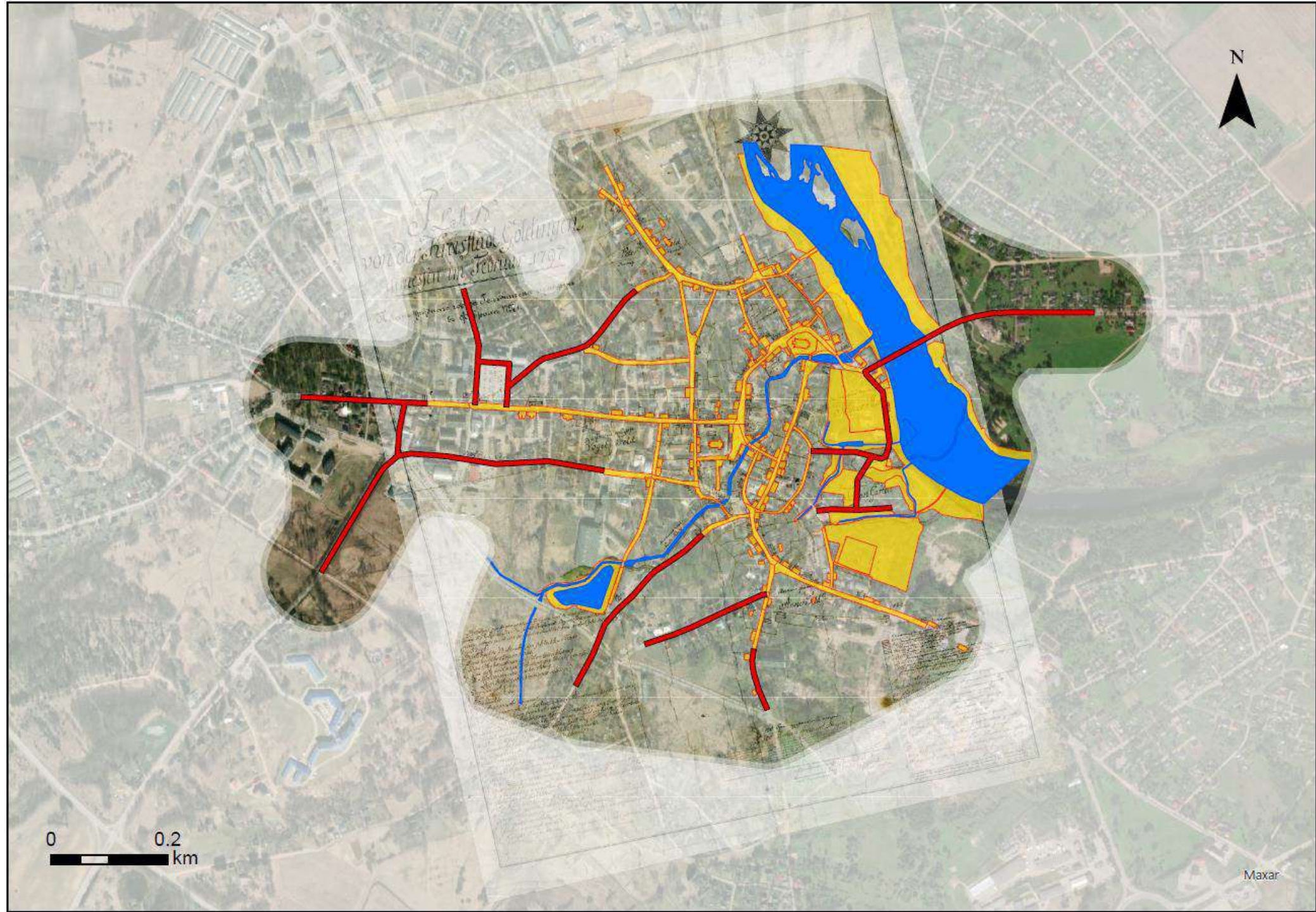




**Figure 6.** The expansion of Kuldīga in the beginning of the 20th century.

**Figure 7.** The expansion of Kuldīga in the 1930s – 1950s.

**Figure 8.** The expansion of Kuldīga in the 1960s – 1980s.

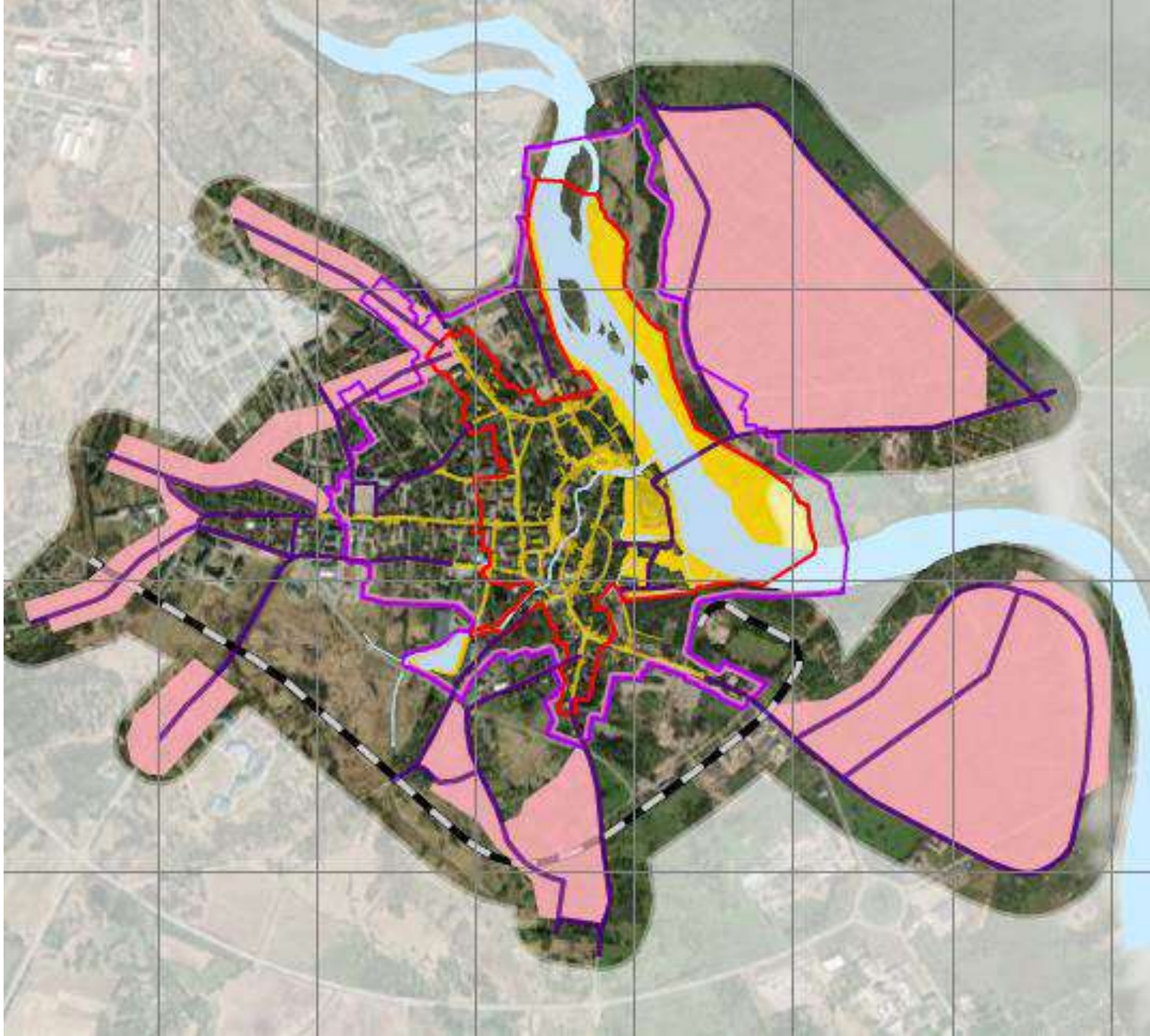




**Figure 6.** The expansion of Kuldīga in the beginning of the 20th century.

**Figure 7.** The expansion of Kuldīga in the 1930s – 1950s.

**Figure 8.** The expansion of Kuldīga in the 1960s – 1980s.

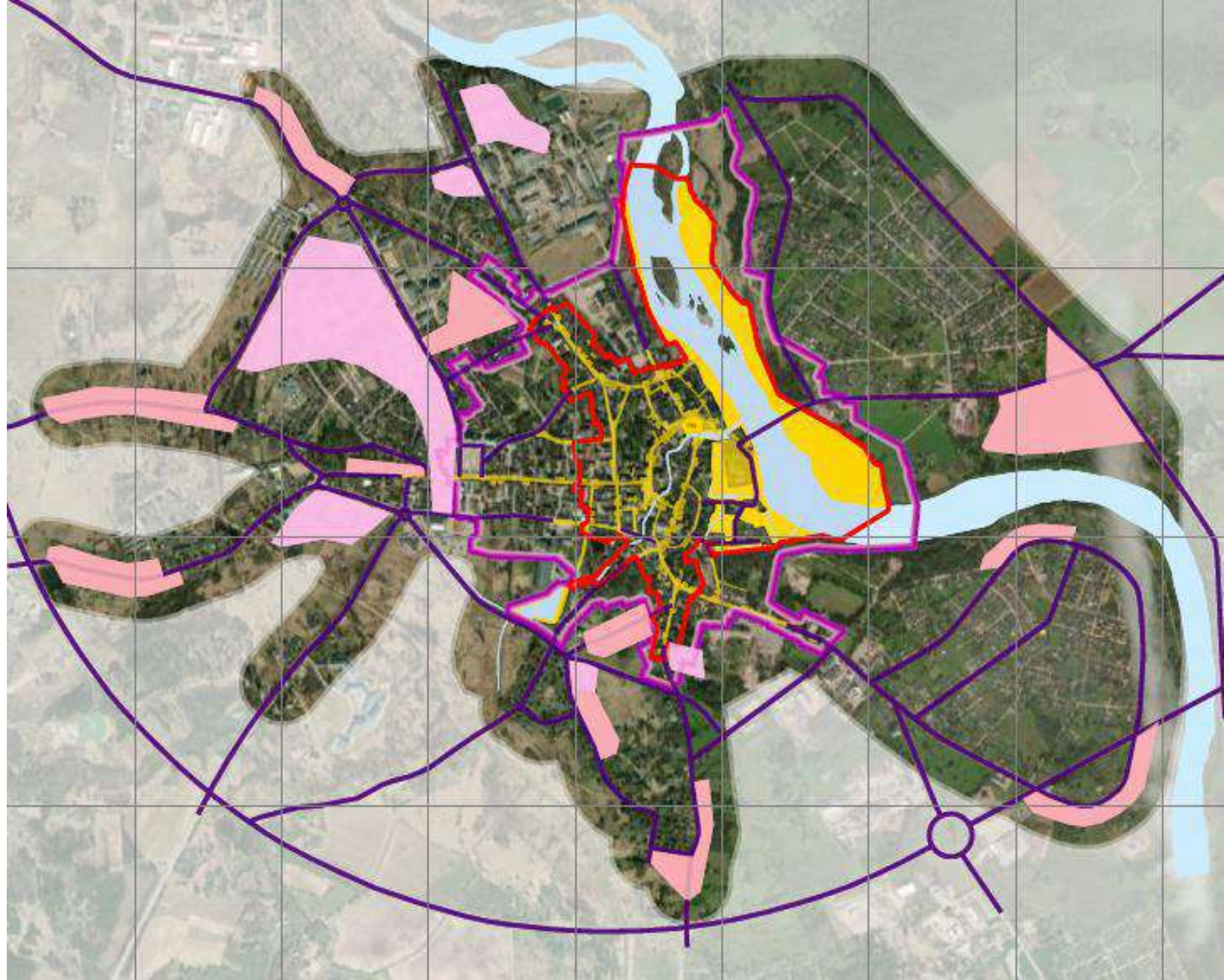




**Figure 6.** The expansion of Kuldīga in the beginning of the 20th century.

**Figure 7.** The expansion of Kuldīga in the 1930s – 1950s.

**Figure 8.** The expansion of Kuldīga in the 1960s – 1980s.





# OUV : STATEMENT OF OUV

---

Kuldīga is an exceptionally well-preserved example of a **traditional urban settlement**. At the **confluence of the Venta River and the smaller Alekšupīte stream**, the beginnings of Kuldīga, which was called Goldingen at the time, date back to the 13th century. The **rivers' intersection** is a defining element of the town's structure, contributing to its **scenic character**. The medieval area of **Kalnamiests**, located on a hill, is clearly distinguishable in the townscape, given its oval shape.

A significant part of Kuldīga's history and development is **linked to the Duchy of Courland and Semigallia**, which governed a significant part of the Baltics between 1561 and 1795. The town was the primary residence and administrative center of the Duchy's first ruler and maintained an important role afterwards. As a result, the town developed into a **prosperous trading hub**. The **international orientation** of the Duchy led to a rising number of foreign merchants and craftsmen settling in Kuldīga, who left their mark on the **architectural language and building decoration of the region**. The **town's structure** has largely retained the **street layout which developed during the period of the Duchy**.

The **architectural influences and craftsmanship traditions introduced during the era of the Duchy** endured well into the 19th century. However, different laws and regulations, aimed at fire safety, led to the progressive replacement of fire hazardous roofing materials. The proportion of **masonry buildings** also increased, replacing traditional **wooden ones**. In the second half of the 19th century, the **brick bridge over the Venta River** was constructed, connecting Kuldīga to the east.

Unlike other towns in the Baltic region, Kuldīga survived the great wars of the 20th century largely unscathed and **modern urban developments were largely implemented far outside its historic center**.





## OUV : STATEMENT OF OUV

---

**Criterion (v):** The old town of Kuldīga is an outstanding example of a **well-preserved urban settlement, representative of traditional Baltic architecture and urbanism and of multiple historical periods – from the 13th to the early 20th centuries.** Its historic urban fabric includes **structures of traditional local log architecture** as well as largely **foreign-influenced techniques and styles of brick masonry and timber-framed houses** that illustrate the **integration of local craftsmanship with foreign influences from other Hanse towns and centers around the Baltic Sea as well as Russia.** The craft skills are prominent in **functional and ornamental building details** throughout the town and **continue to be employed by craftspeople today.** The predominance of **clay tiles as a roofing material** contributes to the **harmonious townscape** of Kuldīga.





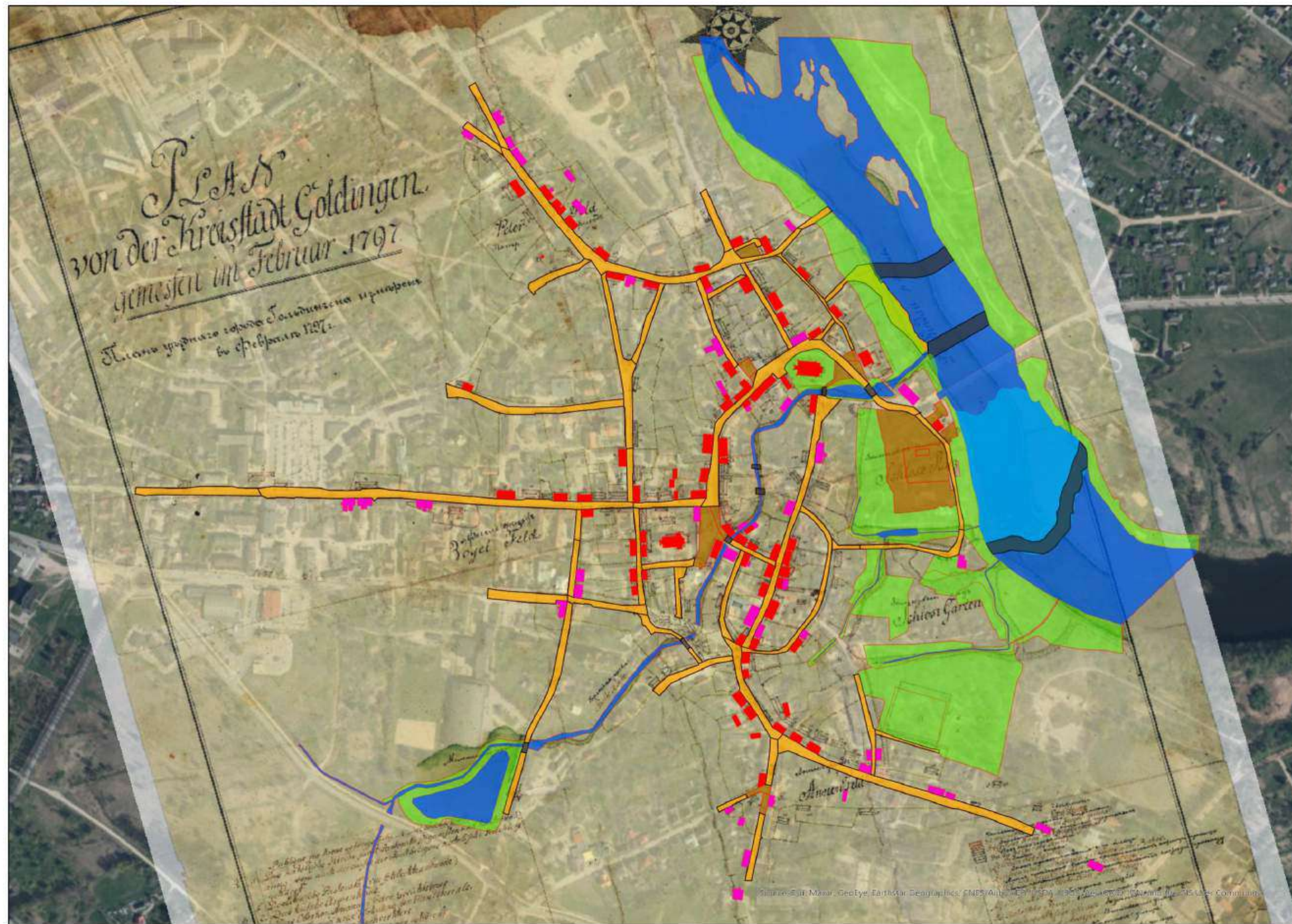
An aerial photograph of a historic town, likely in Europe, featuring numerous buildings with red-tiled roofs. A prominent church with a tall, white spire is visible in the background, rising above a dense forest. The foreground shows a mix of residential and commercial buildings, some with gabled roofs and others with flat roofs. The word "ATTRIBUTES" is overlaid in large, white, sans-serif capital letters across the center of the image. The sky is clear and blue, and the overall scene is bathed in warm, golden light, suggesting late afternoon or early morning.

# ATTRIBUTES



## SUPPORTING ATTRIBUTES OF KULDĪGA OUTSTANDING UNIVERSAL VALUE (OUV)

- Street network
- Squares
- Water bodies
- Watercourses
- Rapids
- River crossings
- Landscape
- Green areas
- Buildings, their elements





# ATTRIBUTES

---

Based on the Statement of OUV and the documentation of attributes of the UNESCO World Heritage property, it was jointly assessed how the existing attributes can best be clustered to provide for effective management and monitoring. This activity was based on the attribute groups mentioned in the nomination file as well as the results of the first stage of the 2023 Heritage Impact Assessment for visitor infrastructure in Pārventas Park. This information was also reassessed considering the feedback and recommendations regarding the HIA brought forward by ICOMOS in the summer of 2024.

As a result, the central value concepts of the World Heritage property were grouped into the following four attribute groups:

1. **LANDSCAPE SETTING**
2. **URBAN LAYOUT**
3. **ARCHITECTURE AND BUILDING FABRIC**
4. **CRAFTSMANSHIP**



includes attributes that illustrate the landscape setting that enabled the development of the Old town of Kuldīga

**ATTRIBUTE GROUP 1: LANDSCAPE SETTING**



1.1 Venta Valley



1.3 Ventas Rumba waterfall



1.2 Confluence of Alekšupīte and Venta

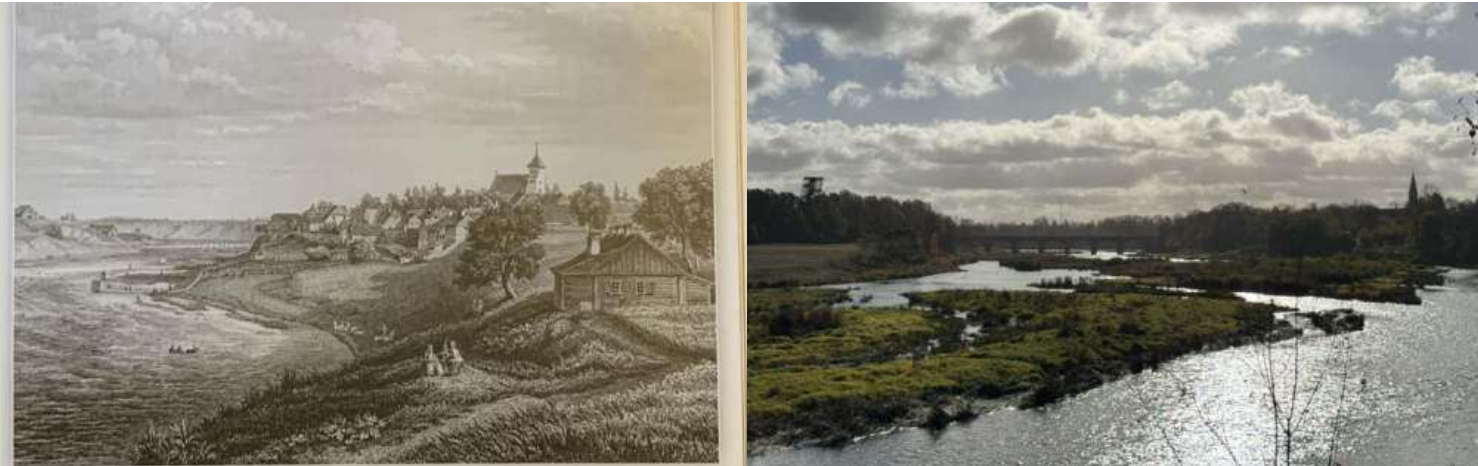


1.4 Town setting

No.	Attribute
1.1	Venta Valley
1.2	Confluence of Alekšupīte and Venta River
1.3	Ventas Rumba waterfall
1.4	Town setting
1.5	Panoramic views and view corridors
1.5a	View corridor from the pathway of a nature walkway north of the property
1.5b	View corridor from the riverbank onto the confluence of Venta and Alekšupīte
1.5c	View corridor from Mārtiņšala beach towards the Medieval castle mound plateau
1.5d	View corridors from the centre of the brick bridge towards the north and south
1.5e	View corridor from the Kuldīga Regional Museum onto Ventas Rumba waterfall



## ATTRIBUTE GROUP 1: LANDSCAPE SETTING



1.5a View corridor from the pathway of a nature walkway north of the property



1.5b View corridor from the riverbank onto the confluence of Venta and Alekšupīte

No.	Attribute
1.1	Venta Valley
1.2	Confluence of Alekšupīte and Venta River
1.3	Ventas Rumba waterfall
1.4	Town setting
1.5	Panoramic views and view corridors
1.5a	<b>View corridor from the pathway of a nature walkway north of the property</b>
1.5b	<b>View corridor from the riverbank onto the confluence of Venta and Alekšupīte</b>
1.5c	View corridor from Mārtiņsala beach towards the Medieval castle mound plateau
1.5d	View corridors from the centre of the brick bridge towards the north and south
1.5e	View corridor from the Kuldīga Regional Museum onto Ventas Rumba waterfall



## ATTRIBUTE GROUP 1: LANDSCAPE SETTING



1.5c View corridor from Mārtiņsala beach towards the Medieval castle mound plateau



1.5d View corridors from the centre of the brick bridge towards the north and south

No.	Attribute
1.1	Venta Valley
1.2	Confluence of Alekšupīte and Venta River
1.3	Ventas Rumba waterfall
1.4	Town setting
1.5	Panoramic views and view corridors
1.5a	View corridor from the pathway of a nature walkway north of the property
1.5b	View corridor from the riverbank onto the confluence of Venta and Alekšupīte
1.5c	<b>View corridor from Mārtiņsala beach towards the Medieval castle mound plateau</b>
1.5d	<b>View corridors from the centre of the brick bridge towards the north and south</b>
1.5e	View corridor from the Kuldīga Regional Museum onto Ventas Rumba waterfall



## ATTRIBUTE GROUP 1: LANDSCAPE SETTING



1.5e View corridor from the Kuldīga Regional Museum onto Ventas Rumba waterfall

No.	Attribute
1.1	Venta Valley
1.2	Confluence of Alekšupīte and Venta River
1.3	Ventas Rumba waterfall
1.4	Town setting
1.5	Panoramic views and view corridors
1.5a	View corridor from the pathway of a nature walkway north of the property
1.5b	View corridor from the riverbank onto the confluence of Venta and Alekšupīte
1.5c	View corridor from Mārtiņsala beach towards the Medieval castle mound plateau
1.5d	View corridors from the centre of the brick bridge towards the north and south
1.5e	<b>View corridor from the Kuldīga Regional Museum onto Ventas Rumba waterfall</b>



#### 4.1.1 VENTA VALLEY



SIGNIFICANCE

#### 4.1.2 CONFLUENCE OF ALEKŠUPĪTE AND VENTA



HIGH  
SIGNIFICANCE



### 4.1.3 VENTAS RUMBA WATERFALL



SIGNIFICANCE

### 4.1.4 TOWN SETTING



SIGNIFICANCE



#### 4.1.5 A VIEW CORRIDOR FROM THE PATHWAY OF A NATURE WALKWAY NORTH OF THE PROPERTY



HIGH  
SIGNIFICANCE



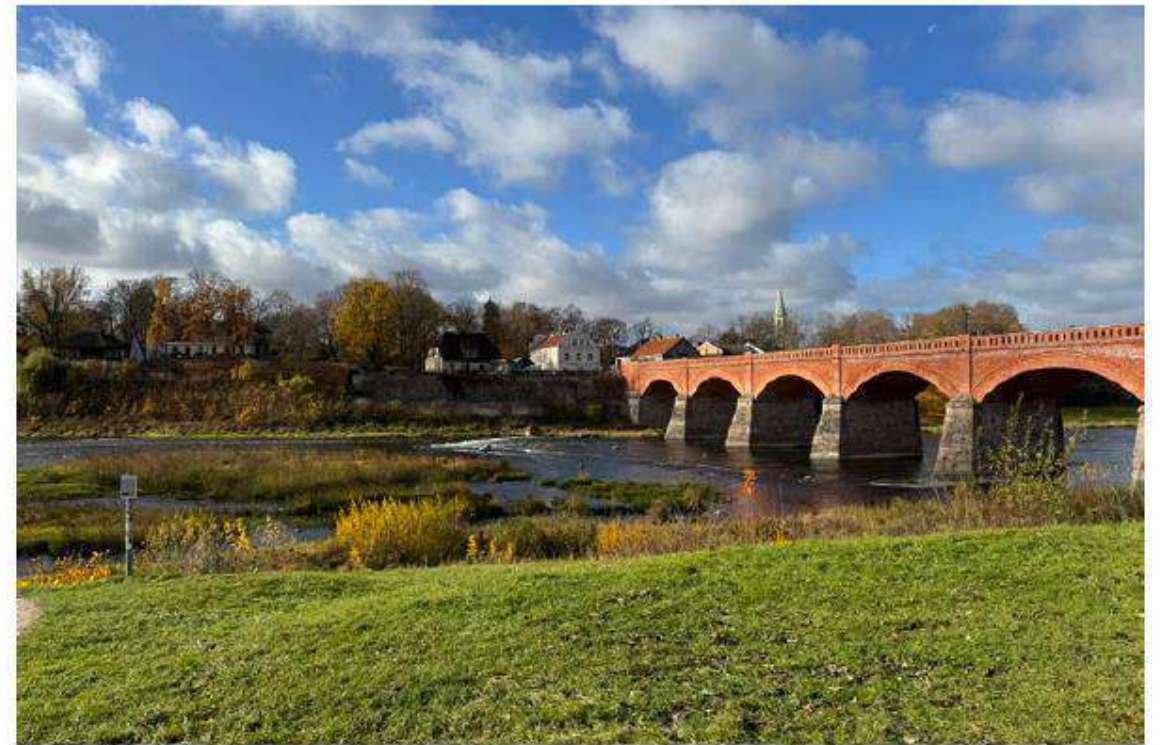
#### 4.1.5 B VIEW CORRIDOR FROM THE RIVERBANK ONTO THE CONFLUENCE OF VENTA AND ALEKŠUPĪTE



HIGH  
SIGNIFICANCE



#### 4.1.5 C VIEW CORRIDOR FROM MĀRTIŅSALA BEACH TOWARDS THE MEDIEVAL CASTLE MOUND PLATEAU



HIGH  
SIGNIFICANCE



#### 4.1.5 D VIEW CORRIDORS FROM THE CENTRE OF THE BRICK BRIDGE TOWARDS THE NORTH AND SOUTH



SIGNIFICANCE



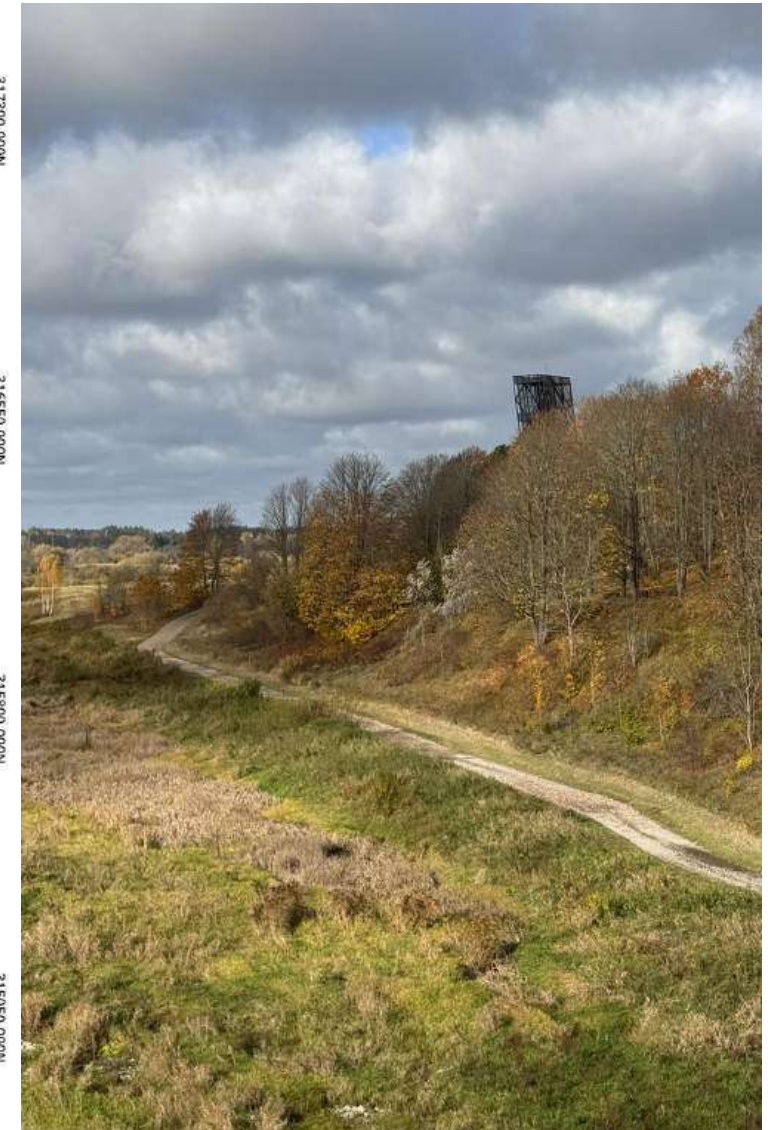
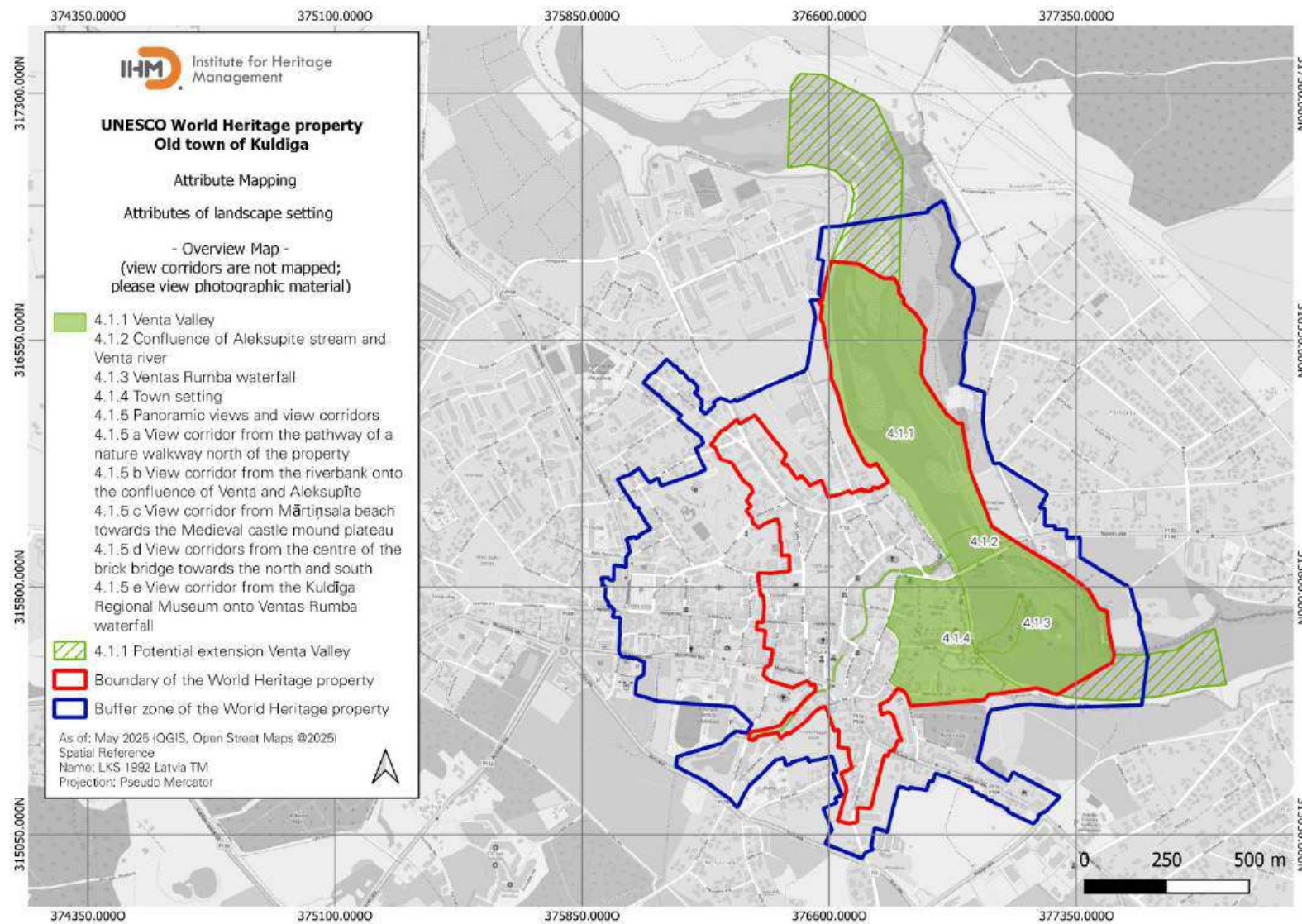
#### 4.1.5 E VIEW CORRIDOR FROM THE KULDĪGA REGIONAL MUSEUM ONTO VENTAS RUMBA WATERFALL



SIGNIFICANCE



## ATTRIBUTE GROUP 1: LANDSCAPE SETTING





includes attributes that illustrate the urban development and dimensions of the Old town of Kuldīga, including landscape elements that influenced this development

**ATTRIBUTE GROUP 2: URBAN LAYOUT**



2.1 Confluence of Alekšupīte stream and Venta River



2.2 Ventas Rumba waterfall



2.3 Street layout



2.4 Public spaces

No.	Attribute
2.1	<b>Confluence of Alekšupīte stream and Venta River</b>
2.2	<b>Ventas Rumba waterfall</b>
2.3a	Street layout (including Kalnamiests, Medieval castle mound plateau, river crossings such as the brick bridge, pathways and streets)
2.3b	<b>Street layout of the Russian Empire within the buffer zone</b>
2.4	<b>Public spaces</b>
2.5	Continuity of urban development proportions
2.5a	Plot layout
2.5b	Town silhouette



## ATTRIBUTE GROUP 2: URBAN LAYOUT



2.5b Town silhouette

No.	Attribute
2.1	Confluence of Alekšupīte stream and Venta River
2.2	Ventas Rumba waterfall
2.3a	Street layout (including Kalnamiests, Medieval castle mound plateau, river crossings such as the brick bridge, pathways and streets)
2.3b	Street layout of the Russian Empire within the buffer zone
2.4	Public spaces
2.5	Continuity of urban development proportions
2.5a	Plot layout
2.5b	<b>Town silhouette</b>



#### 4.1.1 CONFLUENCE OF ALEKŠUPĪTE AND VENTA



SIGNIFICANCE

#### 4.2.2 VENTAS RUMBA WATERFALL



HIGH  
SIGNIFICANCE



### 4.2.3 STREET LAYOUT



HIGH  
SIGNIFICANCE

4.2.3 a Street layout (including Kalnamiests, Medieval castle mound plateau, river crossings such as the brick bridge, pathways and streets)

POTENTIAL  
SIGNIFICANCE

4.2.3 b Street layout of the Russian Empire within the buffer zone



#### 4.2.4 PUBLIC SPACES

SIGNIFICANCE





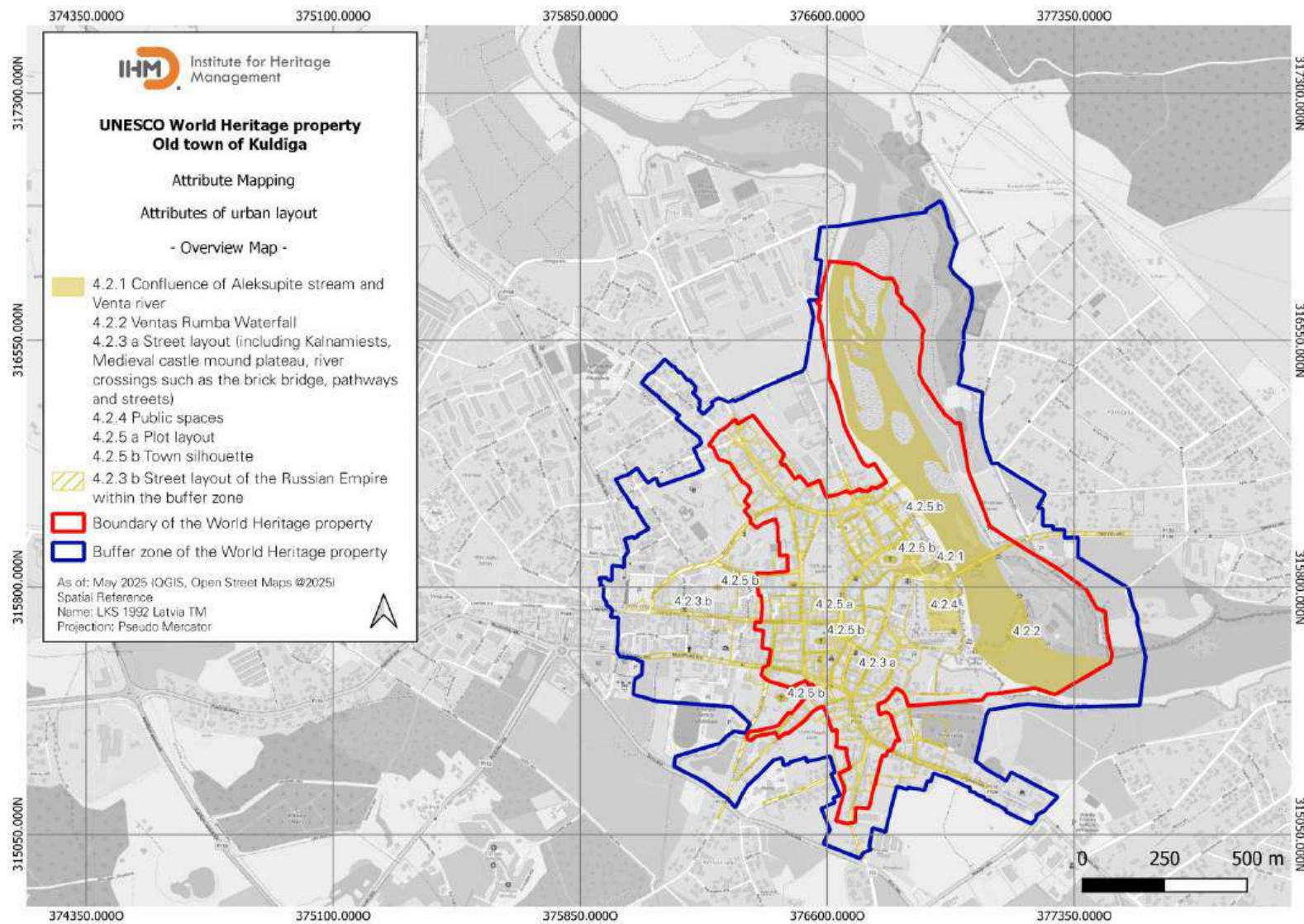
## 4.2.5 A PLOT LAYOUT



SIGNIFICANCE



## ATTRIBUTE GROUP 2: URBAN LAYOUT





includes attributes that illustrate the different development stages of the traditional Baltic architecture mentioned in the Statement of OUV, including different international influences

## ATTRIBUTE GROUP 3: ARCHITECTURE AND BUILDING FABRIC



3.1 Architecture and building fabric of Ducal times



3.2 Architecture and building fabric of the Russian Empire

No.	Attribute
3.1	<b>Architecture and building fabric of Ducal times</b>
3.1a	Dwellings and auxiliary buildings of the Ducal era
3.1b	St. Catherine's Lutheran Church, Holy Trinity Roman Catholic Church, the sexton's and the organist's homes in Raiņa Street, the old Town Hall, the bell tower of the town's first cemetery, the Supreme Court House of the ducal era, the warehouse at 3 Liepājas Street
3.1c	Dwellings and auxiliary buildings of the Ducal era in the buffer zone
3.2a	<b>Architecture and building fabric of the Russian Empire</b>
3.2b	Orthodox Church of the Holy Virgin, St. Anna's Church
3.2c	Orthodox building complex at Liepājas Street



## ATTRIBUTE GROUP 3: ARCHITECTURE AND BUILDING FABRIC



3.3 Architecture and building fabric of Latvia's first independence



3.5 Clay tile roofscape



3.4 Building materials representative of societal and economical changes based on international relations and trading



3.6 View corridors

No.	Attribute
3.3	<b>Architecture and building fabric of Latvia's first independence</b>
3.3a	Architecture and building fabric of Latvia's first independence within the buffer zone
3.4	<b>Building materials representative of societal and economical changes based on international relations and trading</b>
3.4a	Wooden façades
3.4b	Stone façades
3.4c	Brick façades
3.4d	Plaster façades
3.4e	Mixed-method façades
3.5	<b>Clay tile roofscape</b>
3.6	<b>View corridors</b>
3.6a	View corridors from St. Catherine's Church



## ATTRIBUTE GROUP 3: ARCHITECTURE AND BUILDING FABRIC



3.6b View corridor across architecture of different periods along Liepājas Street



3.6c View corridor across Catholic church district along Raina street



3.6d View corridor across roofscape at Town Hall square



3.6e Panoramic view from the needle tower

No.	Attribute
3.6b	View corridor across architecture of different periods along Liepājas Street
3.6c	View corridor across Catholic church district along Raina street
3.6d	View corridor across roofscape at Town Hall square
3.6e	Panoramic view from the needle tower



### 4.3.1 ARCHITECTURE AND BUILDING FABRIC OF DUCAL TIMES



Figure 32: The Holy trinity Roman Catholic Church gives context to the Duchy's relations with Poland-Lithuania

SIGNIFICANCE

4.3.1 a Dwellings and auxiliary buildings of the Ducal era

HIGH  
SIGNIFICANCE

4.3.1. b St. Catherine's Lutheran Church, Holy Trinity Roman Catholic Church, the sexton's and the organist's homes in Raiņa Street, the old Town Hall, the bell tower of the town's first cemetery, the Supreme Court House of the ducal era, the warehouse at 3 Liepājas Street

POTENTIAL  
SIGNIFICANCE

4.3.1 c Dwellings and auxiliary buildings of the Ducal era in the buffer zone



## 4.3.2 ARCHITECTURE AND BUILDING FABRIC OF THE RUSSIAN EMPIRE



Figure 33: The former synagogue today houses Kuldīga's library

SIGNIFICANCE

4.3.2 a Architecture and building fabric of the Russian Empire

POTENTIAL  
HIGH  
SIGNIFICANCE

4.3.2 b Orthodox Church of the Holy Virgin, St. Anna's Church



Figure 34: The Orthodox Church of the Holy Virgin

POTENTIAL  
SIGNIFICANCE

4.3.2 c Orthodox building complex at Liepājas Street



### 4.3.3 ARCHITECTURE AND BUILDING FABRIC OF LATVIA'S FIRST INDEPENDENCE



*Figure 36: This Art Deco building from 1934 today houses the Collection and Research Department of the Kuldfga Regional Museum. It is a potential attribute of OUV*

#### SIGNIFICANCE

4.3.3 Architecture and building fabric of Latvia's first independence

#### POTENTIAL SIGNIFICANCE

4.3.3 a Architecture and building fabric of Latvia's first independence within the buffer zone



### 4.3.4 BUILDING MATERIALS REPRESENTATIVE OF SOCIETAL AND ECONOMICAL CHANGES BASED ON INTERNATIONAL RELATIONS AND TRADING



Figure 38: Stone buildings were introduced to Kuldīga during the Duchy of Courland and Semigallia

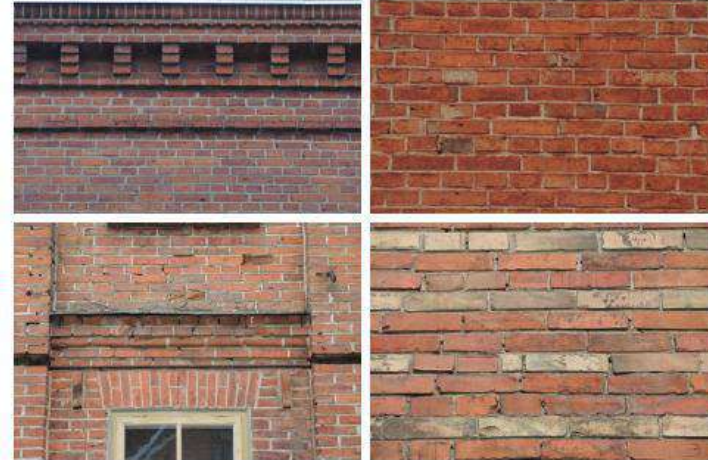


Figure 40: Red and yellow brick facades with brick cornices are common elements of Kuldīga's townscape



Figure 39: The façade of the building at Baznīcas Street 36 shows the typical façade design of later wooden buildings found throughout the Old town of Kuldīga, including delicately carved corner cornices



Figure 41: Plaster facades started appearing during the Russian Empire. They continue the rectangular partition of the façade and also include cornices

SIGNIFICANCE



### 4.3.5 CLAY TILE ROOFSCAPE



SIGNIFICANCE



#### 4.3.6 A VIEW CORRIDORS FROM ST. CATHERINE'S LUTHERAN CHURCH



HIGH  
SIGNIFICANCE



#### 4.3.6 B VIEW CORRIDOR ACROSS ARCHITECTURE OF DIFFERENT PERIODS ALONG LIEPĀJAS STREET



SIGNIFICANCE



#### 4.3.6 C VIEW CORRIDOR ACROSS CATHOLIC CHURCH DISTRICT ALONG RAINA STREET



SIGNIFICANCE



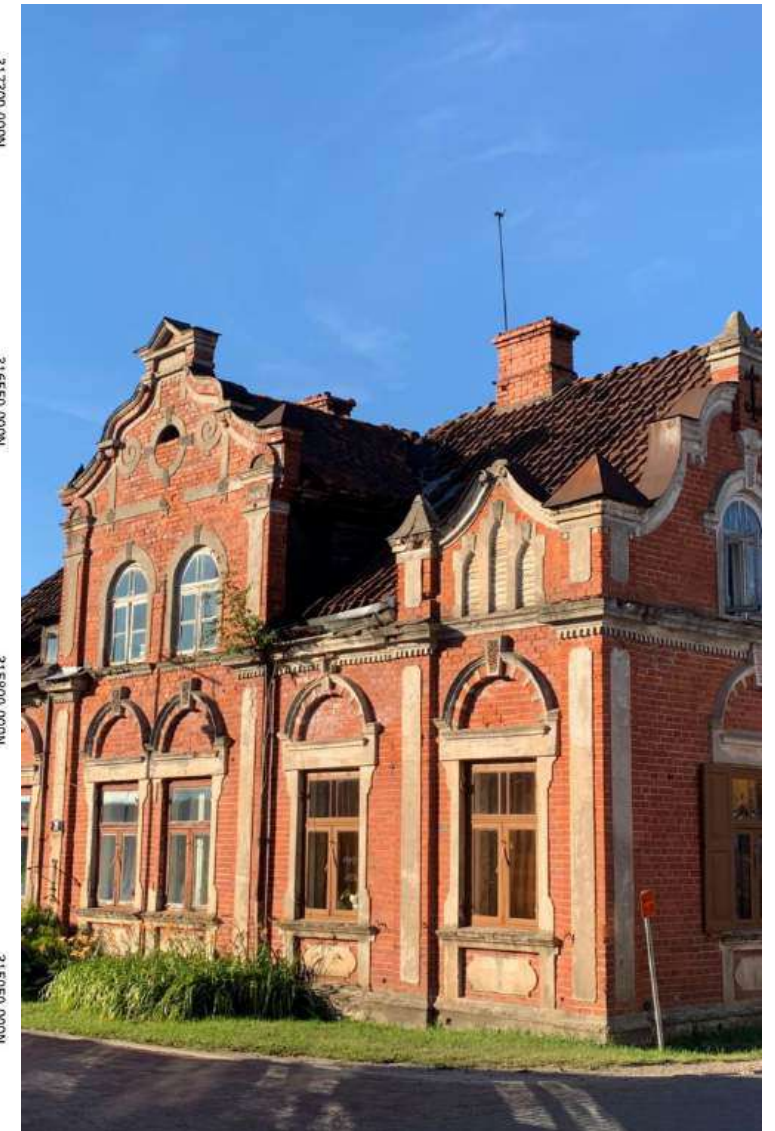
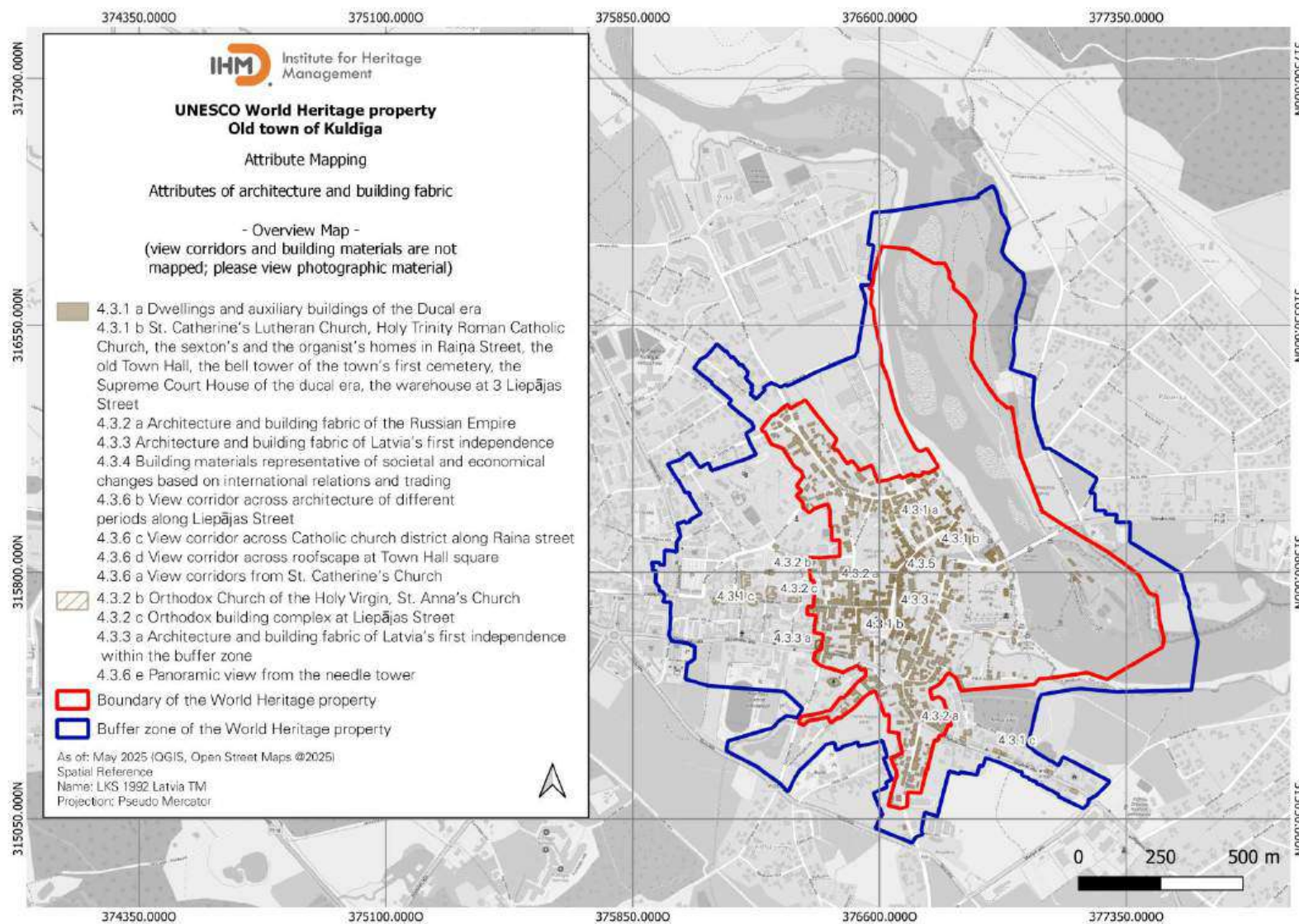
#### 4.3.6 D VIEW CORRIDOR ACROSS ROOFSCAPE AT TOWN HALL SQUARE



SIGNIFICANCE



## ATTRIBUTE GROUP 3: ARCHITECTURE AND BUILDING FABRIC





includes attributes that illustrate the influence foreign craftsmen had on the building details in Kuldīga as well as on the craftsmanship traditions until this day

**ATTRIBUTE GROUP 4: CRAFTSMANSHIP**



4.1 Doors



4.2 Canopies



4.3 Porches



4.4 Windows

No.	Attribute
4.1	Doors
4.2	Canopies
4.3	Porches
4.4	Windows
4.4a	Front façade windows
4.4b	Gable windows
4.4c	Lantern windows
4.5	Windboards
4.6	Rain gutters
4.7	Weather vanes



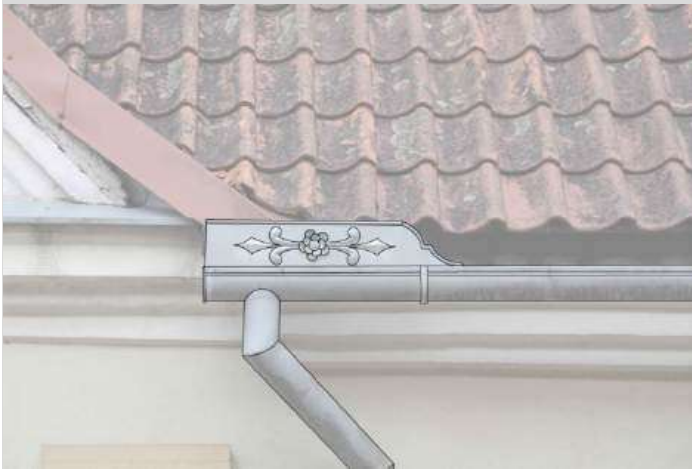
ATTRIBUTE GROUP 4: CRAFTSMANSHIP



4.4 Windows



4.5 Windboards



4.6 Rain gutters



4.7 Weather vanes

No.	Attribute
4.1	Doors
4.2	Canopies
4.3	Porches
4.4	Windows
4.4a	Front façade windows
4.4b	Gable windows
4.4c	Lantern windows
4.5	<b>Windboards</b>
4.6	<b>Rain gutters</b>
4.7	<b>Weather vanes</b>



#### 4.4.1 DOORS



SIGNIFICANCE



## 4.4.2 CANOPIES



SIGNIFICANCE



### 4.4.3 PORCHES



SIGNIFICANCE



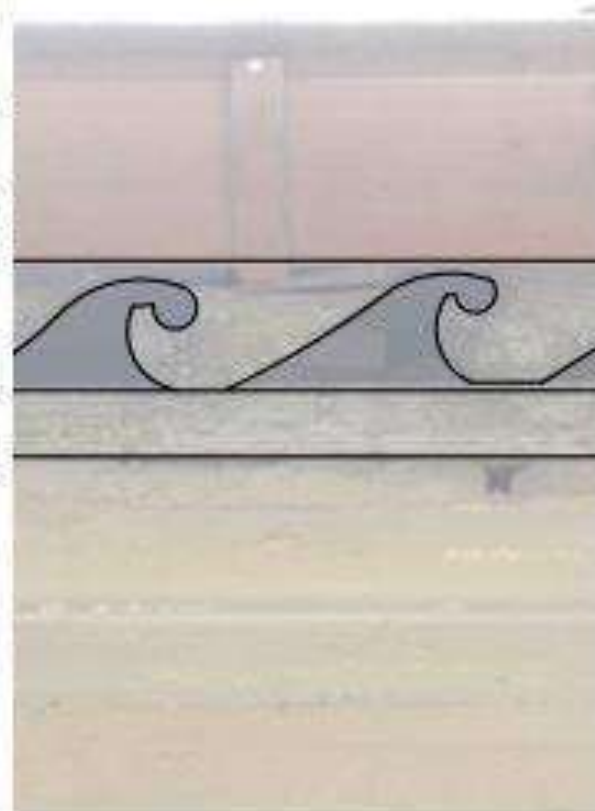
#### 4.4.4 WINDOWS



SIGNIFICANCE



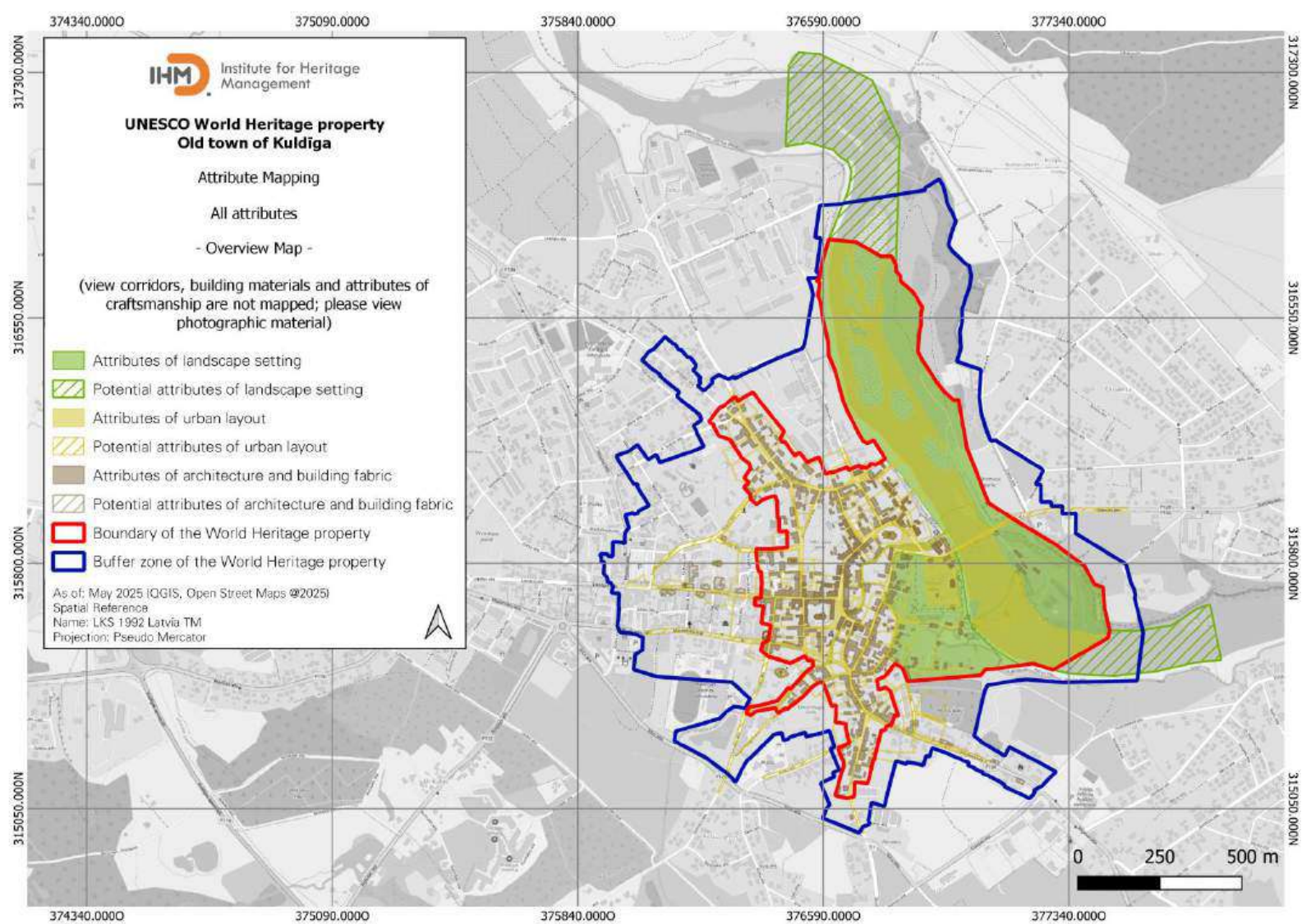
#### 4.4.5 WINDBOARDS



SIGNIFICANCE



# ATTRIBUTES: OVERVIEW





# MANAGEMENT

A photograph of a row of traditional European houses, likely in a historic town. The houses have light-colored, possibly plastered walls and dark brown tiled roofs. The windows are multi-paned and framed in light green or grey, with dark wooden shutters. A wooden door is visible on one of the houses. The sky is bright blue with scattered white clouds. The word "MANAGEMENT" is overlaid in large, white, bold, sans-serif capital letters across the middle of the image.

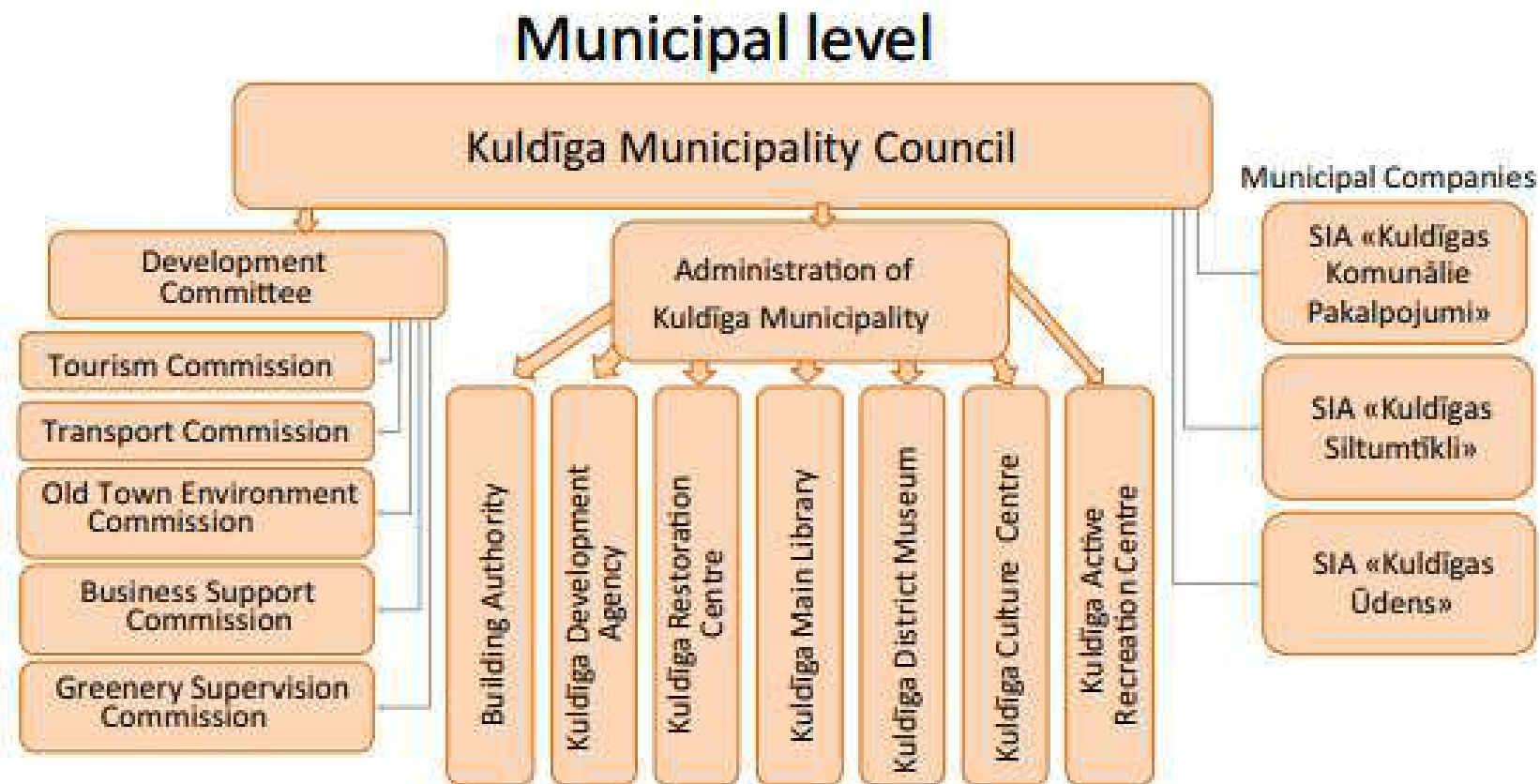


# INTEREST GROUPS RELATED TO THE PRESERVATION OF A CULTURAL-HISTORICAL SITE OR ENVIRONMENT

- Local and regional municipalities
- National environmental protection institutions
- Site owner
- Science, education, and cultural workers
- Tourists and visitors
- Local residents
- Representatives of the tourism industry, local entrepreneurs, and business representatives
- NGOs



# AUTHORITIES RESPONSIBLE FOR CULTURAL AND NATURAL HERITAGE PROTECTION





# WAY TO WHL FROM 1997



The work on the application of the nomination "Kuldīga Old Town in Ventas Hollow" to the UNESCO World Heritage List began in 1997, shortly after Latvia joined the UNESCO Convention on the Protection of World Cultural and Natural Heritage.

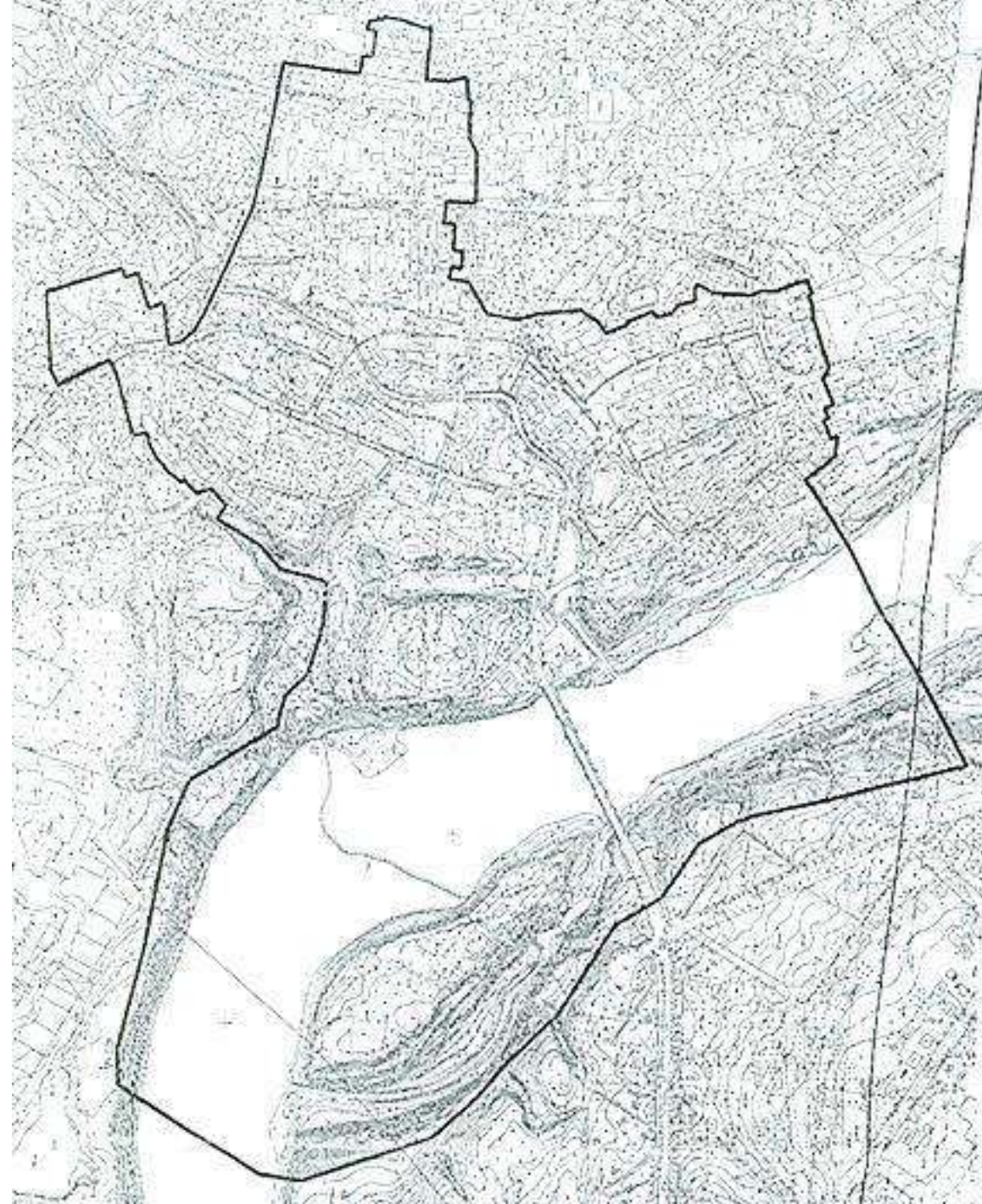


2001 The municipality of Kuldīga submitted a report to the Latvian National Commission for UNESCO on the desire to start work on the preparation of the nomination of Kuldīga together with the National Cultural Heritage Board.

2004 The nomination of Kuldīga was approved for the Latvian National List of UNESCO World Heritage.

2011 The UNESCO LNC Assembly approved the nomination of Kuldīga in the Latvian National List of UNESCO World Heritage.

2021 The State of Latvia submits Latvia's nomination to UNESCO "Kuldīga - Goldingen in Courland", we are waiting for the conclusion of ICOMOS experts and the time and place of the UNESCO Committee.

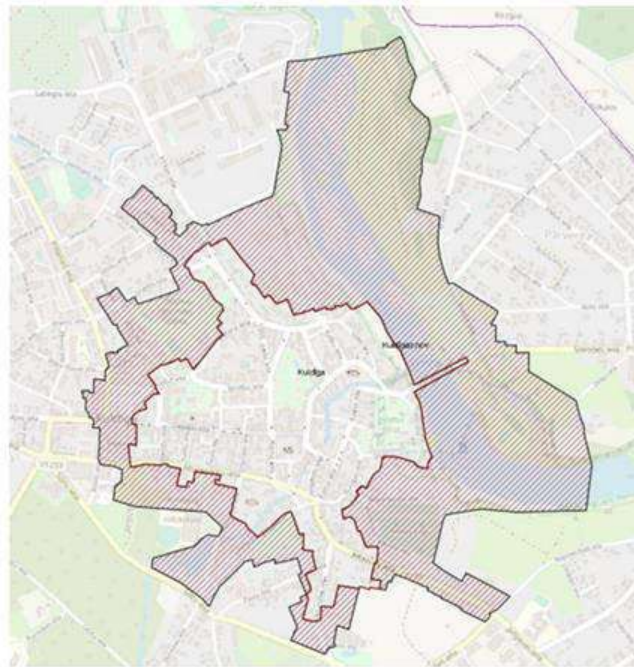




# HERITAGE PROTECTION IN THE OLD TOWN OF KULDĪGA

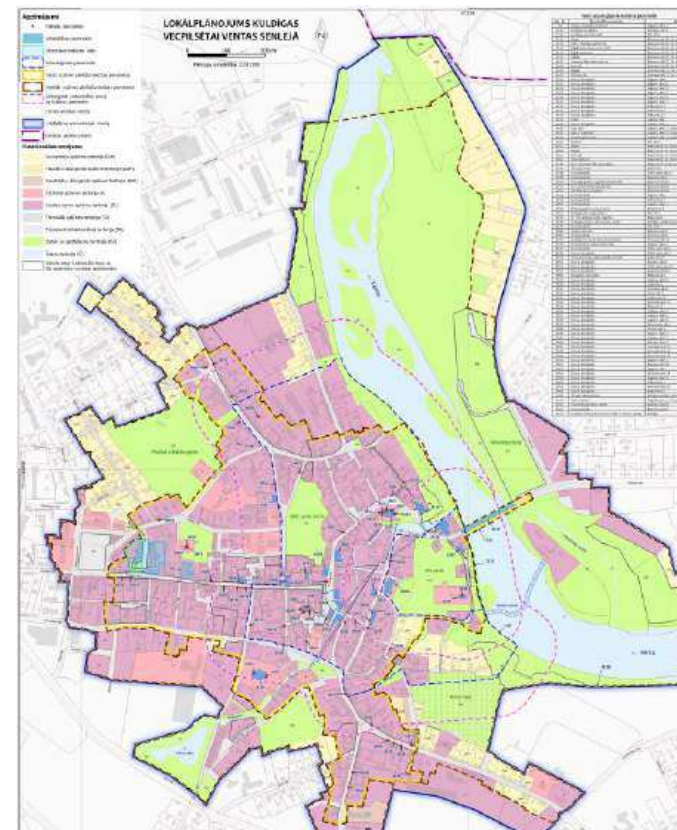
Pielikums  
Kultūras ministrijas  
24.02.2022. rīkojumam Nr.2.5-1-30

Kuldīgas vēsturiskā centra nomale ar Ventas senleju  
Kuldīgas novads, Kuldīga; Kuldīgas pilsētas vēsturiskajam centram pieguļošā teritorija  
Vietējās nozīmes arhitektūras (pilsētbūvniecības) piemineklis



- kultūras pieminekļa teritorija

- the protected urban planning monument of national importance "Historical Center of Town of Kuldīga";
- State urban planning monument of local importance "Outskirts of the historical center of Kuldīga with the ancient valley of Venta"
- archaeological monuments of national importance "Kuldīga Ancient Town" and "Kuldīga Medieval Castle";



- historical monument of national significance "Baltic Teachers' Seminary";
- a monument of national importance - the place of a historical event «Needle Factory»;
- 19 architectural monuments of national importance and 4 of local importance;
- 29 artistic monuments of national importance and 30 of local importance.



# HERITAGE PRESERVATION: PLANNING AND REGULATORY FRAMEWORK

## MANAGEMENT PLAN KULDĪGA Goldingen in Courland Nomination for Inscription on the UNESCO World Heritage List



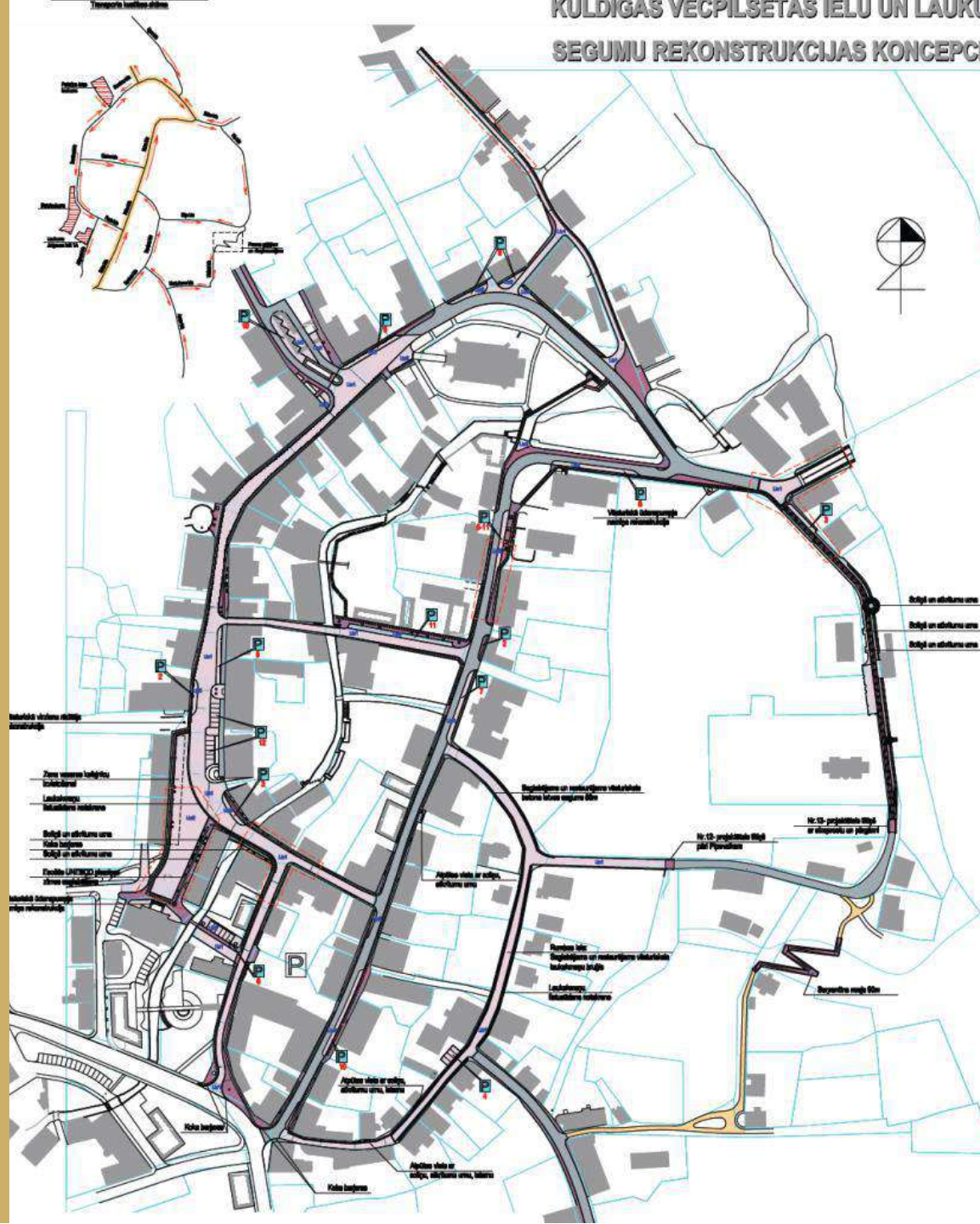
Kuldīga (*Goldingen in Courland*):  
Management Plan incl. Risk Management  
Plan

Old town Local Plan: approved and started  
to be implemented in 2023.





# THE CONCEPT OF THE STREETS AND SQUARES OF THE OLD TOWN OF KULDĪGA



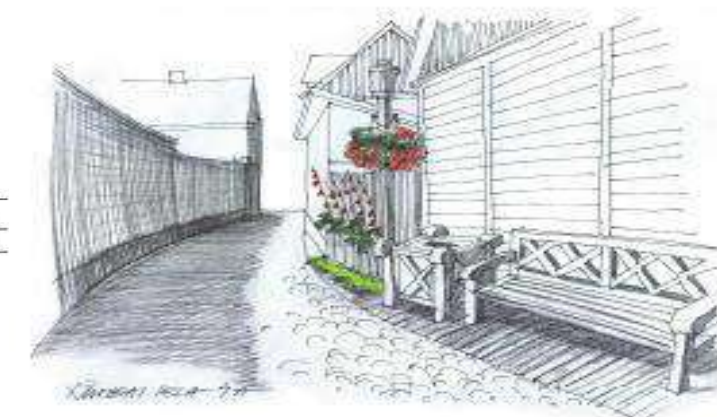
### Ausdrücke im Sinne von



Abbildung 6 zeigt die pro Kette berechneten

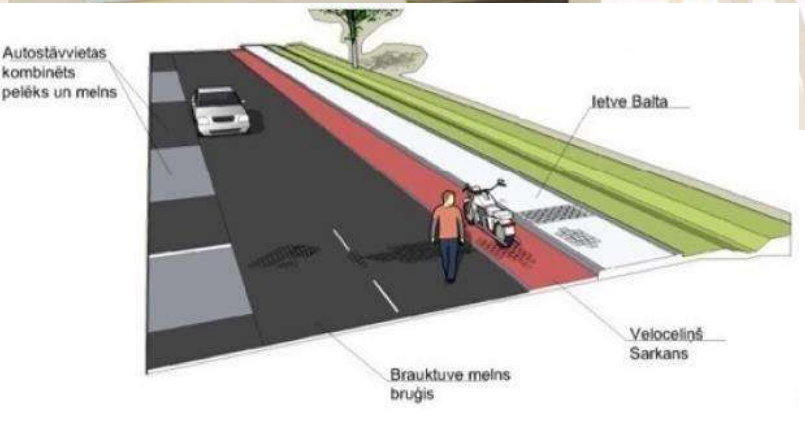
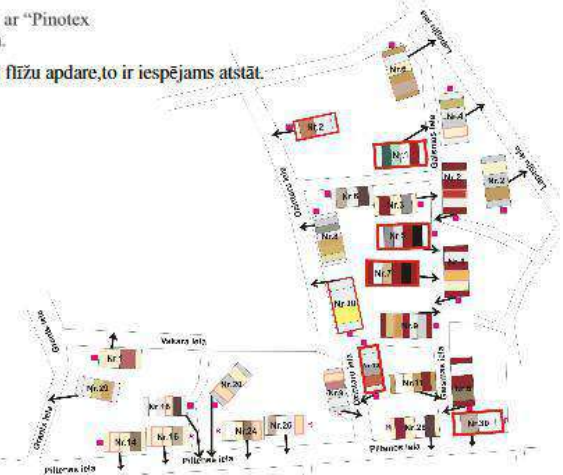


### Abstraktas filtrų Pustis lais





CONCEPTS,  
GUIDELINES FOR  
CREATING A  
UNIFIED URBAN  
ENVIRONMENT





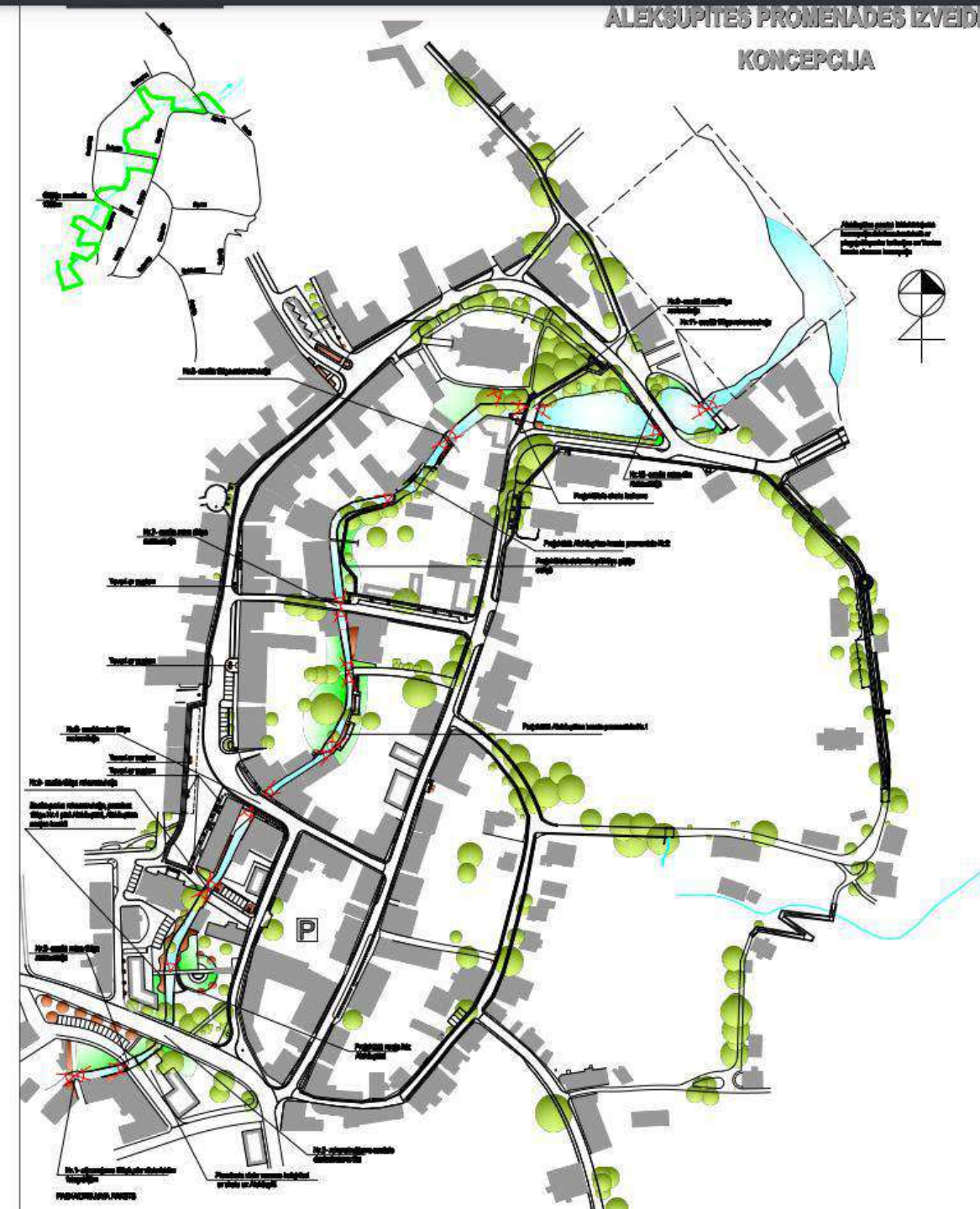


**WHETHER  
COMPLYING  
TO KULDĪGA'S  
CULTURAL  
ENVIRONMENT**

*Foto - Ieva Benčfelda*

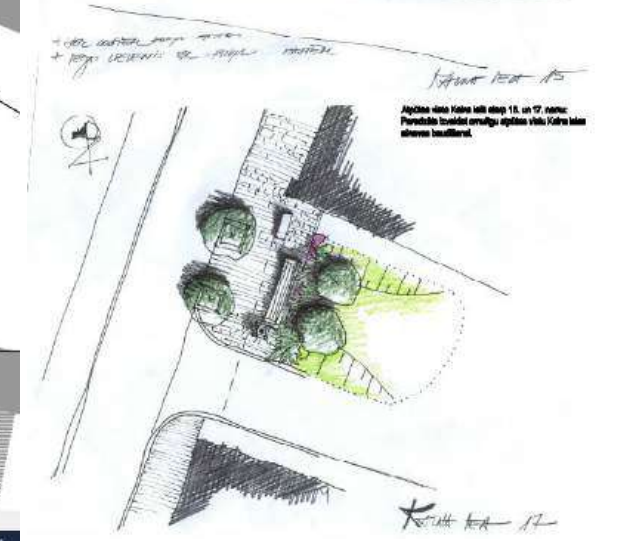
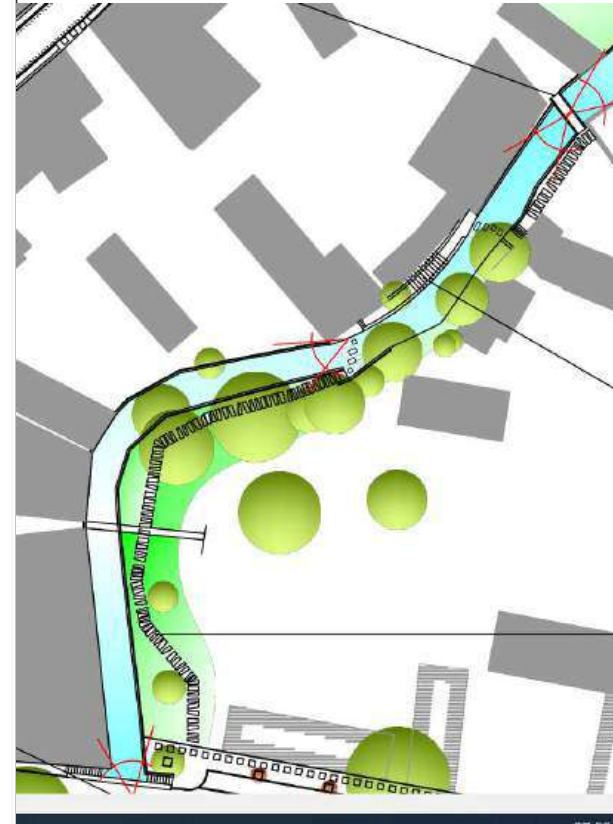
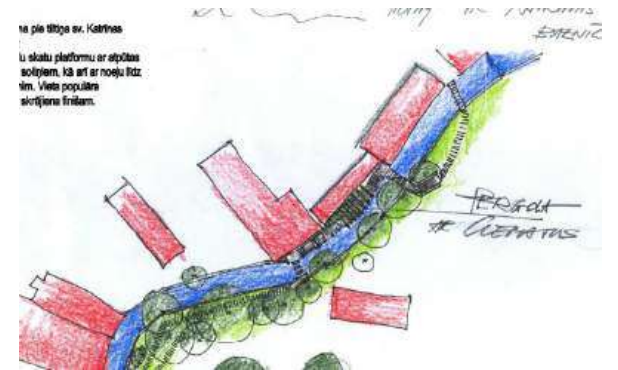


# THE OVERALL CONCEPT OF THE STREETS, GREENERY, LIGHTING OF THE OLD TOWN, 2010



## PIENĒMTIE APZĪMĒJUMI

- Esošie, saglabājamie koki un krūmi
- Projektētie koki un krūmi
- Esošie saglabājamie apstādījumi
- Projektētie apstādījumi
- Vērtīgākās Aleksupites skatu vietas







	- ESOŠĀ ĒKA
⊙	- ESOŠĪ LAPU KOKI
LK	- PROJEKTĒTIE AUGI
BS	- LOGU KONTEINERI
	- BRĪVI AUGOŠĪ STĀDJUMI



Nr.1
BS
DA fasāde
8 gab. Peoniņas un 13 gab. Lauztā sirds

Nr.3
BS
DR fasāde
5 gab. bārbeles blakus esošajai

Nr.3/5
BS
DR, demontēt betona stabus, esošie koki topogrāfijā neatbilst realitātei
13 gab.grimonji

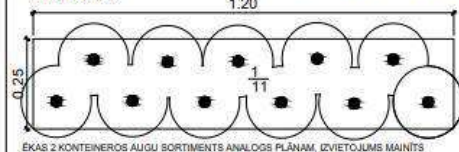
Nr.7
LK, marka
1. stāvs
3. gab.

Nr.10
LK, marka
1. stāvs
2. gab.

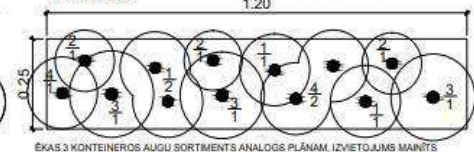
Nr.	Latīniskais nosaukums	Latviskais nosaukums	Augšanas periods	H (mm)	Piesaugušu augu vaiņags (mm)	H (mm) stādot	Vaiņaga forma	Stādīšanas attālums (mm)	Sakņu sist. (kont., litros)	Ziedu krāsa	Ziedēšanas laiks	Gab.
	<b>Ēka Kalna ielā Nr. 1</b>											
	Berberis thunbergii 'Carmen'	Tunberga bārbeles šķ.	daudzgadīgs	1600	1200	800	stāvs	1000	C3	dzeltena	VI	5
	<b>Ēka Kalna ielā Nr. 3</b>											
	Paeonia lactiflora	Peonija	daudzgadīgs	1000			izpleta	700		rozā	VI	8
	Dicentra spectabilis	Lauztā sirds	daudzgadīgs	700	600		izpleta	500		balta rozā	V-VIII	13
	<b>Ēka Kalna ielā Nr. 3/5</b>											
	Cornus alba 'Spaethii'	Baltā grimoga šķ.	daudzgadīgs	2000			stāvs	1200	C5	balta	VI-VII	13
	<b>Ēkas Kalna ielā Nr. 5, 7, 9, 10</b>											
1	Lathyrus odoratus 'Little Sweetheart'	Smaržīgs pulkšnis	viengadīgs	250			nokarena stāvs			balta rozā	VI-IX	34
2	Nicotiana glauca	Puku tabaka	viengadīgs	300-500			stāvs			sāta	VIII-IX	9
3	Plectranthus amboinicus 'Variegatus'	Plektrants	viengadīgs	~800			nokarena					9
4	Verbena		viengadīgs				nokarena			viola	VI-IX	9

\* daudzgadīgs, kas izmantojams kā viengadīgs

LOGU KONTEINERA LK3 PARAUGS ĒKAJ KALNA IELĀ 10 (1200X250mm).  
M 1:10 - 2 GAB



LOGU KONTEINERA LK4 PARAUGS ĒKAI KALNA IELĀ 7 (1500X250mm),  
M 1:10 - 3 GAB

[illegible]

PROJEKTA AUTORSĀS TĒMĒŠĀS PROJEKTA TĒMĀS			
ADRESE RĪGA, DABUĻA IELA 14A LATVIA		 ZALA LANDSCAPE ARCHITECTS	
INŽINIERU ZIŅĀDĀVAJĀS			
PROJEKTA UZDAVĒS: LINDA ZALA		DATUMS PRASĒBĒS 11.10.2013.	
PASŪTĪTĀJS KULĒGĀS NOVADE DOME		PASŪTĪTUMA NR.	
DARBI:			
<b>APSTĀDŪJUMA KONCEPCIJAS ĢISTRADĒ KULĒGĀS KULĒGĀS NOVADA ĢESTRADĒ 01 NR./NOV/2013/28</b>			
<b>PASĒLUMA NOGAUMS KALKU IELAS APSTĀDŪJUMA IZVIETOJUMA PLĀNS UN DETALIZĀCIJA</b>			
PROJEKTA NR.		DARBA ĢESTS	
		<b>TEHNISKS PROJEKTS</b>	
DATUMS		MĒROGŠ	
11.10.2013.		1 : 500	
ĢĒHĒKĀ TP	MĒRKA TS	ĢĒRŠ NR.	LĒPI NR.
		TS-14	26
<b>ĢESTRADĒJĀS:</b>			
atzinu arhitekts: LINDA ZALA atzinu arhitekts: MADARA LEZDINA			



# DEVELOPMENT OF GREEN AND BLUE AREAS, MANAGEMENT STRATEGY AND IMPLEMENTATION



- Parks, squares
- Public utilities (benches, playgrounds, etc.)
- Greenery
- Environmental cleaning measures (joint cleaning)
- Tree care
- Animal welfare
- etc.

- Blue flag swimming area
- Lamprey programme
- Licensed fishing
- Compliance with environmental quality
- etc.



## DEVELOPMENT OF ENGINEERING SYSTEMS

- water pipes
- sewerage
- rainwater drainage
- urban reclamation
- heating networks
- town lighting





**THE CHARACTER  
OF THE OLD  
TOWN IS MADE  
UP OF MORE  
THAN 400  
HISTORICAL  
BUILDINGS, 60%  
OF WHICH ARE  
WOODEN  
STRUCTURES**







In the preservation of cultural heritage, there is an understanding that museums, churches and palaces are valuable cultural and historical heritage, but also the building in which local residents live is just as valuable cultural and historical heritage, which also requires careful treatment.;



Residents have been living in these buildings for several generations, but the Soviet-era ideology of joint ownership has contributed to a long-term change in attitude.



# INVOLVEMENT AND OPINIONS OF INHABITANTS

- *Why can't we walk through the yard anymore*
- *Do not park in our backyard*
- *Don't walk through our backyard*
- *This is not our backyard*
- *We want to park the car near the house*



Žogs ap īpašumu – labi vai slikti? | Kurzemnieks.lv

Visit

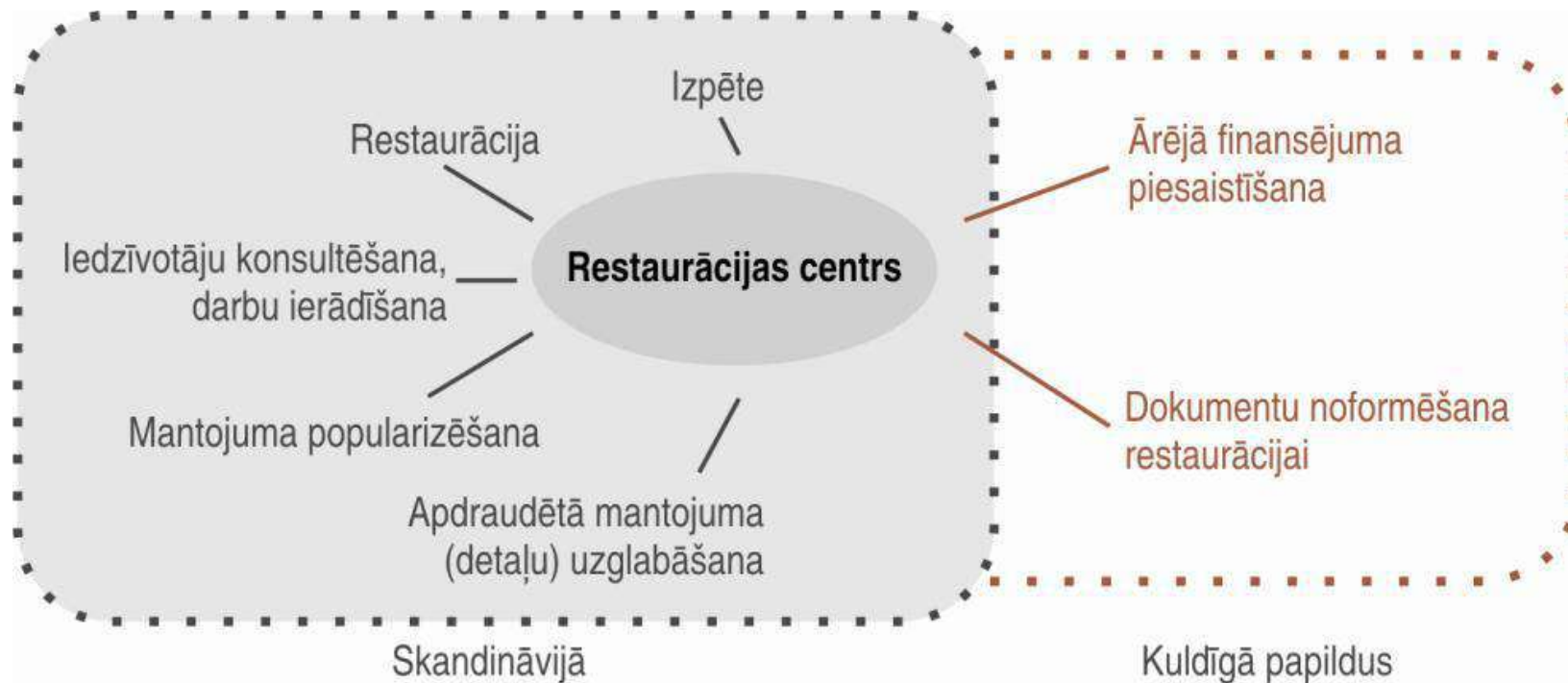


# DEVELOPMENT OF OBJECT IDEA, CONCEPT AND DETAILS





# PRINCIPLES OF PRESERVATION AND RESTORATION IN KULDĪGA





# **PRESERVATION OF THE OLD TOWN OF KULDĪGA IS A PRIORITY IN THE SUSTAINABLE DEVELOPMENT STRATEGY, DEVELOPMENT PROGRAMME AND BUDGET OF THE KULDĪGA DISTRICT**

## **RESEARCH**



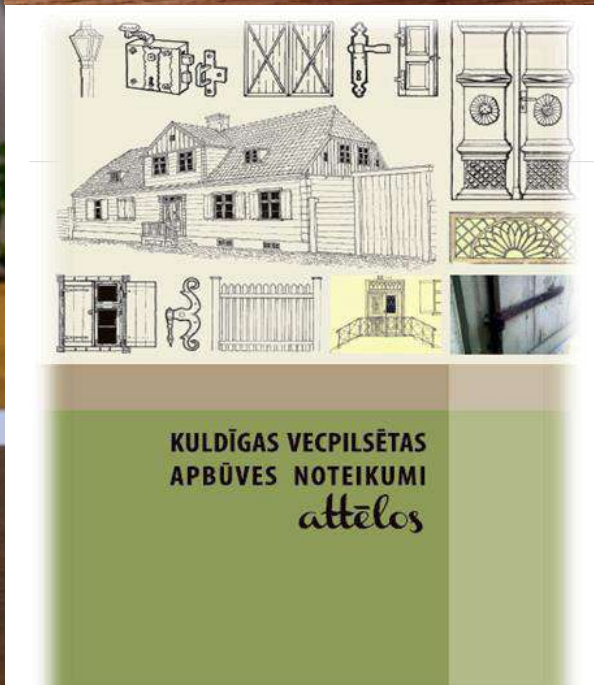
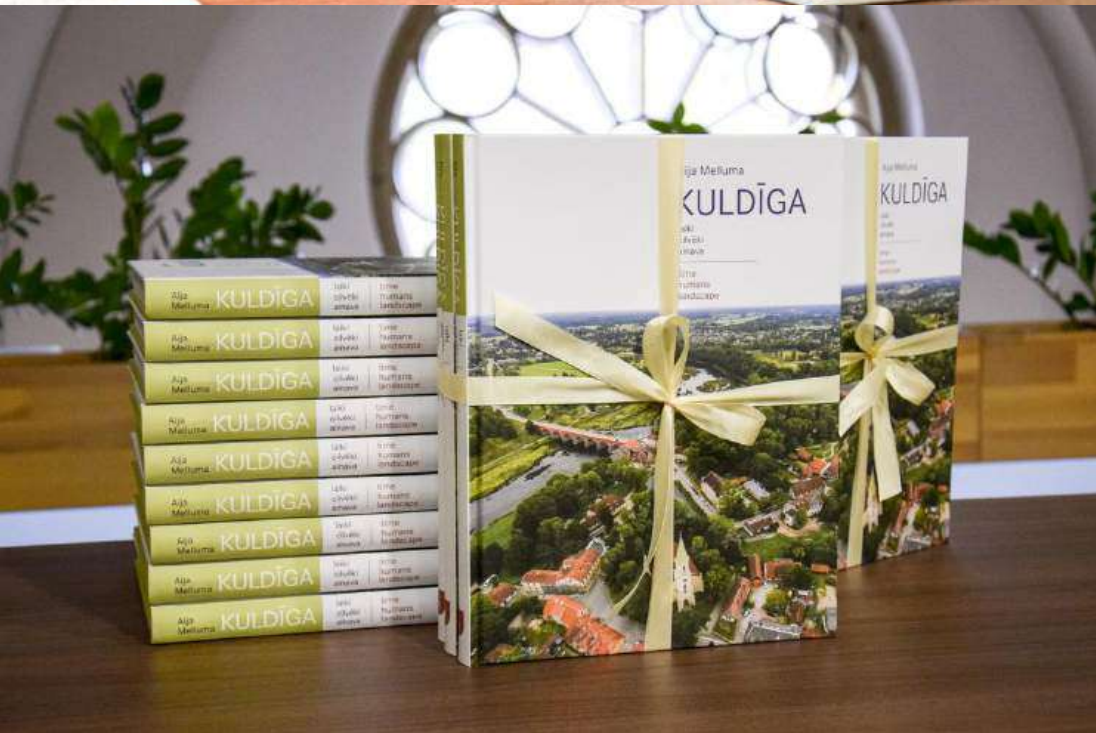
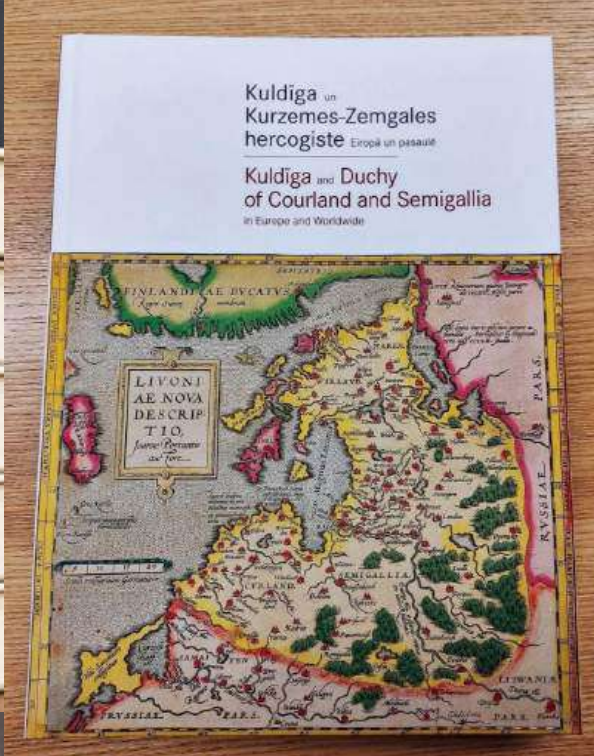
## **HERITAGE PROTECTION**



## **EDUCATION AND COMMUNITY INVOLVEMENT**

## **BUILDING AN IMAGE**





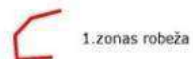
**EXPLORING  
VALUES OF  
KULDĪGA**



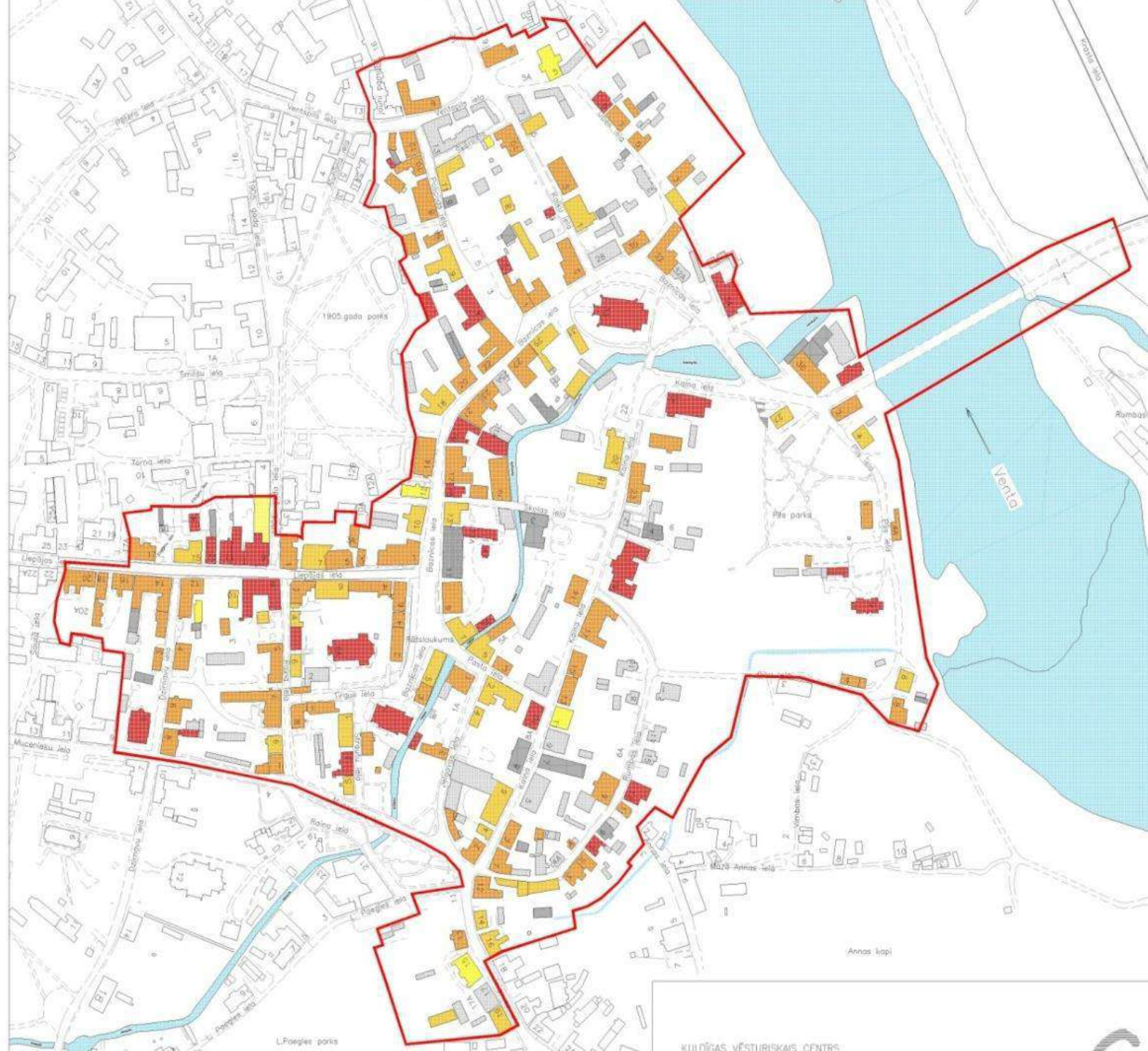
# RESEARCH

## PIEZĪMES

1. Apsēkošana veikta 2009. g. pavasarī - vasarā
2. Autentiskums vērtēts tikai pēc vizuālas apsekošanas un vēsturisko materiālu izpētes.
3. Ēkām, kurām nesen veikti remontdarbi, apmetuma un apdares slāņu zondāžas nav veiktas, līdz ar to autentiskā apdares slāņa apjoma un detaļu saglabātības pakāpes vērtējums ir hipotētisks.
4. Kartogrammā atspoguļotie rezultāti nav uzskatāmi par nemainīgiem. Pēc pilnvērtīgas ēku arhitektoniski mākslinieciskās izpētes vai inventarizācijas veikšanas, autentiskuma pakāpe var mainīties.
5. Inventarizācijā nav vērtētas vēsturiskās ēkas, kas ir radikāli pārveidotas vai par kurām nav iegūta nekāda vēsturiska informācija, kā arī saimnieciskā rakstura būves, kas saglabājušās tikai daļēji vai par kurām trūkst informācija kādā no vērtējamajiem kritērijiem. Nav vērtētas ēkas, kas nav pieejamas apsekošanai (slēgtā privātpasuma teritorijā).
6. Atsevišķas ēkas (piem., Kalna iela 3/5 un Jelgavas iela 12, līt 002-004 u.c.) vērtētas kā vienots objekts, ko nosaka ēku arhitektūra.
7. Kā jaunbūves vērtētas vēsturiskās ēkas, kas uzbūvētas pilnībā no jauna veco pamatu vietā, vai apjomā, kas vizuāli līdzīgs vēsturiskajam, bet no mūsdienīgiem vai vēsturiskajai ēkai neatbilstošiem materiāliem.



### ĒKAS KOPĒJĀ AUTENTISKUMA PAKĀPE



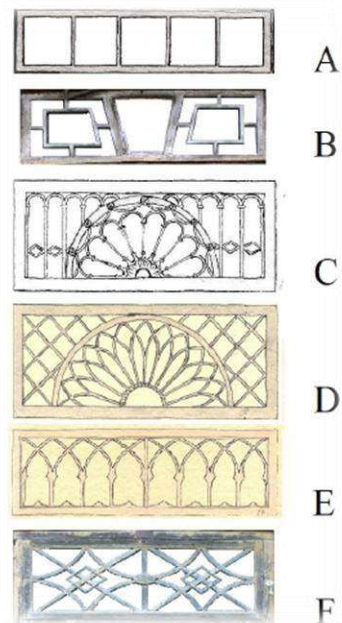


**LEARNING THE  
KNOWLEDGE AND  
SKILLS  
(ARTISANS,  
PROFESSIONALS)**

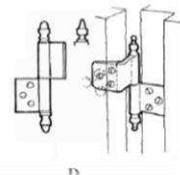
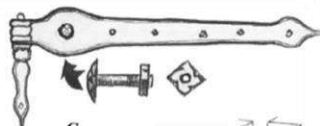
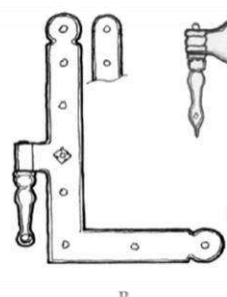
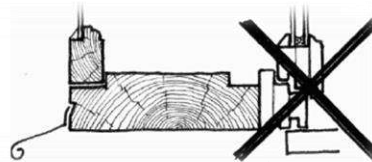
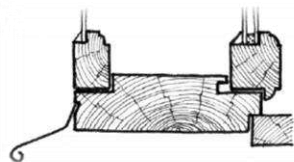
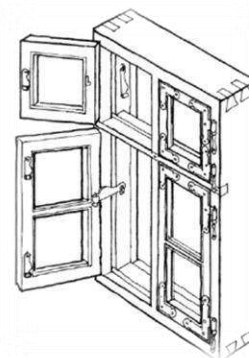
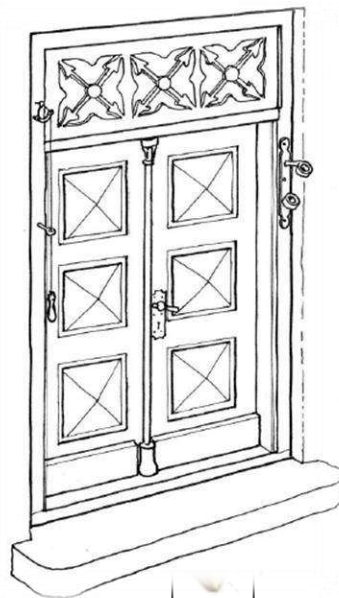




# TRADITIONAL CONSTRUCTION AND DETAILS OF KULDĪGA IN FREEHAND SKETCHES



A  
B  
C  
D  
E  
F

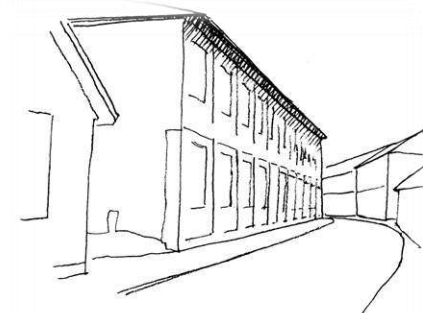
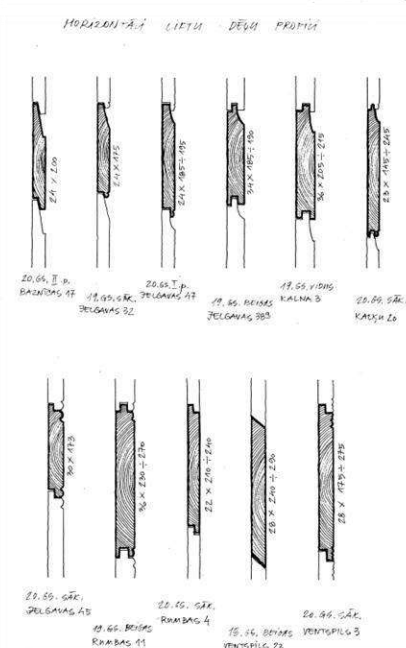
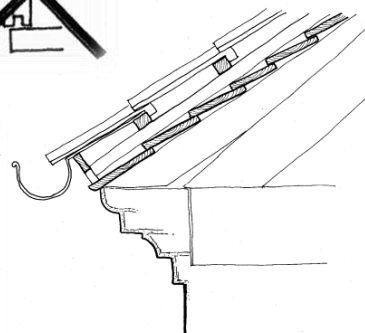


A

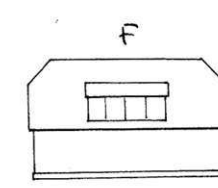
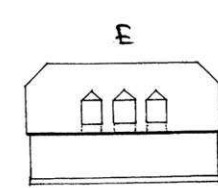
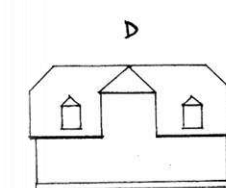
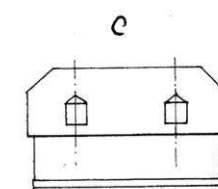
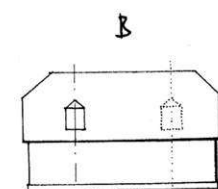
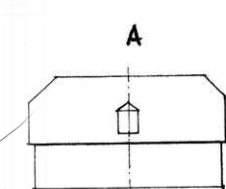
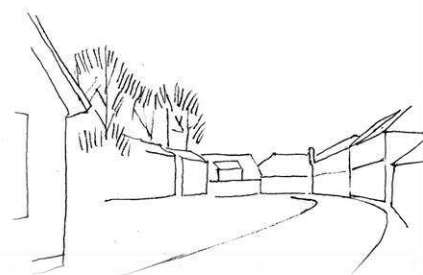
B

C

D



PILSĒTAS VĒSTURISKĀJĀ CENTRĀ PĀRSTĀVĀJA  
BŪVA APBŪVE AR IZMĀNOTĀM IZCIĒMĀ. SKATĀM  
PĀRĒKŠĀS TĀS SKATĀM PERSPEKTĪVĒS.



A

B

C

D

E

F



## LEARNING THE KNOWLEDGE AND SKILLS (POPULATION)



The goal is to show that practical maintenance work is simple, it is possible to do it yourself and the process is even pleasant. The activity creates a sense of belonging to Kuldīga and responsibility for restoring one's property.

**Preservation and maintenance of cultural heritage as a socialization activity.**



## A large crowd of people is gathered in a town square. In the foreground, several people are wearing bright blue t-shirts with yellow numbers on the back. The crowd is diverse in age and clothing. In the background, there is a two-story building with a red roof and arched windows. The square is paved with cobblestones, and the overall atmosphere is that of a community event or festival.



Sagaidi domniecības kāpnes pie durvīm pie **PIEDURVJU KAPNES**

Capitoli na metalu dani su: NORTUNUS, AUBRIOMUS, logo VERTU na  
SLEČU FIKSATOR, ENGLES. Na ovoj logo, dječe razporedžani su  
mogućnosti: STUNISUS\*, LEMNUS\* » AULIKTUS\* » kod i  
identifikat gubi na gramatu, ijan biluati, ijan raskidati » ar dječe vrtu.



1. \_\_\_\_\_
2. \_\_\_\_\_
3. \_\_\_\_\_
4. \_\_\_\_\_
5. \_\_\_\_\_

Ja vēlaties piedalīties pārstieguma balvas izlozē, lūdzu sniegt ziņas par sevi:  
 Vārds, uzvārds \_\_\_\_\_  
 Adrese, tālruna numurs \_\_\_\_\_

Aizpildītu anketu nododiet Kuldīgas pilsētas Domē  
vai sūtiet pa pastu Baznīcas ielā 1, Kuldīgā, LV-3301 līdz 2008. gada 1. jūnijam  
**Paldies par atbildēm!**



## CO-FINANCING PROGRAMMES

- Competition "Let's do it ourselves";
- Competition "Restoration and conservation of buildings located in the territory of the cultural monument of national importance "Historical center of the Kuldīga", as well as buildings included in the list of protected cultural monuments of the Latvian State in Kuldīgas District";
- Competition "Refurbishing apartment residential buildings and yards in Kuldīga";
- Regular window maintenance campaign;
- <http://kuldiga.lv/lv/kuldiga/kuldigas-vecpilseta/atbalsts-iedzivotajiem>

2011



2017





# CO-FINANCING PROGRAMMES

An overview of projects implemented to preserve historic buildings under the support program

	2014	2015	2016	2017	2018	2019	2020	TOTAL
Applications	26	33	41	25	38	30	34	227
Approved	18	32	32	24	36	27	31	200
Total sum, EUR	100 155,00	136 287,77	145 996,39	131 315,94	201 298,80	204 767,75	167 524,28	1 087 345,93
Implemented	10	23	21	12	17	19	18	120
Total sum, EUR	53 943,70	96 031,83	88 856,84	61 481,53	90 427,22	106 900,66	135 833,25	633 475,03

Annual programme for the restoration and preservation of the buildings

Municipal support programme for the improvement of territories of apartment buildings

Before



After



Before



After



Before



After



Before



After





**LIVING OLD  
TOWN**

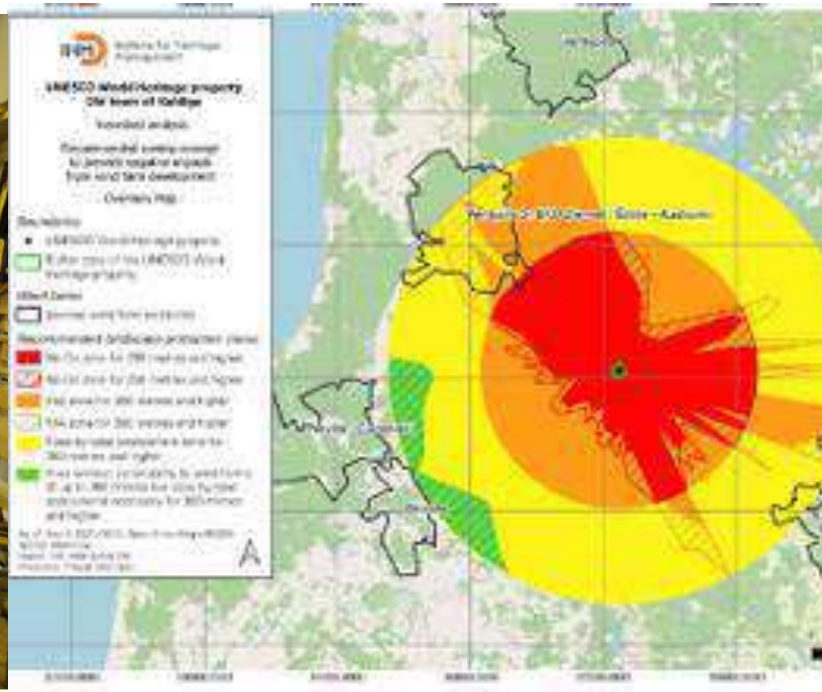
**-  
LIVING  
ENVIRONMENT  
FOR LOCALS  
AND VISITORS**





## THE LAW OF PRESERVATION OF KULDIGA OLD TOWN– A NORM NECESSARY TO ADDRESS THE PRESERVATION OF ALL VALUES

- Authenticity in spirit of place;
- Authenticity in function;
- Outstanding universal value - attributes;
- Landscape protection zone – wider setting, based on viewshed analysis;
- Intangible heritage related – craftman traditions, research etc.







# THANK YOU FOR YOUR ATTENTION!

**SEPTEMBER 10-15, 2025**  
**KULDIGA, LATVIA**



**DR. ARCH. JANA JĀKOBSONE**  
The chair of organizational committee  
ICOMOS Latvia  
CIVVIH expert member  
WHS Old town of Kuldiga site manager