

A photograph of a cityscape at sunset. In the foreground, a large building is under construction, covered in scaffolding. The scaffolding has blue horizontal bars with the text "CHRISTIANA STILAS" repeated. In the background, a city skyline is visible under a bright orange and yellow sky. A prominent tall, dark building stands out in the city skyline. The water of a bay or fjord is visible between the foreground and the city.

The Venice Charter in a changing world

Presentation
CIVVIH symposium 5.-6.
September
Sinassos, Cappadocia, Turkey

Hogne Langset
Oslo, Norway

Modern cultural heritage management = management of change

Main object at alteration and adaption:

- Make cultural heritage **relevant** to present and future society
- As little loss of heritage value as possible in the process



Oslo



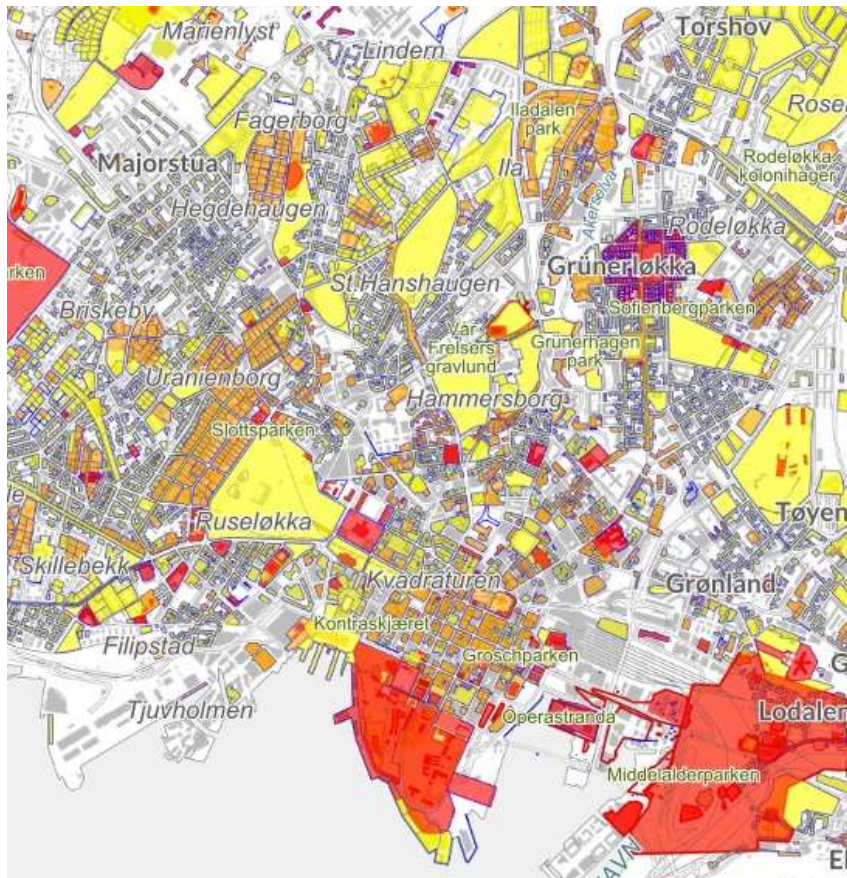


Oslo

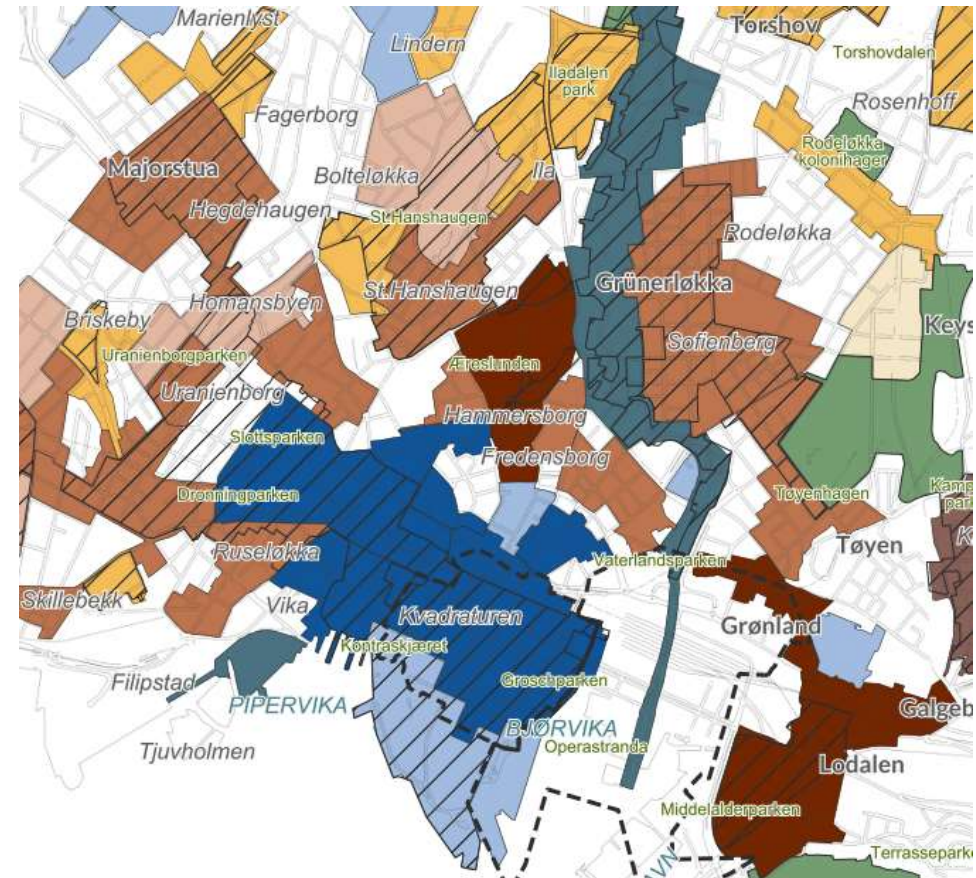
1. Expansion of the Cultural Heritage Field in Number and Types of Sites

Expansion in numbers

Listed cultural heritage in the historic center of Oslo 2024



Listed objects and sites (all colors)



Added listed areas/sections in masterplan

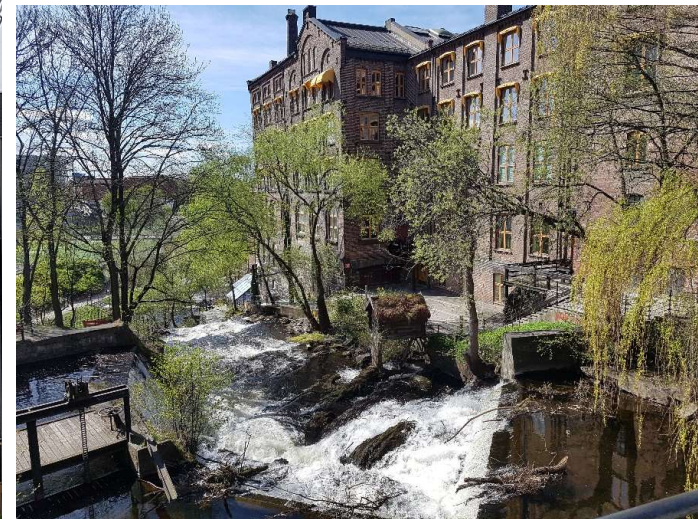


Oslo

09.03.2025

Expansion in types

Industrial heritage



Oslo

Expansion in types

20th century heritage





Oslo

2. Changing Alliances, Values and Power Dynamics

Alliances, Values and Power Dynamics



Oslo

09.03.2025

8



Oslo

3. Contemporary challenges

Contemporary challenges

Risk preparedness - Terrorism



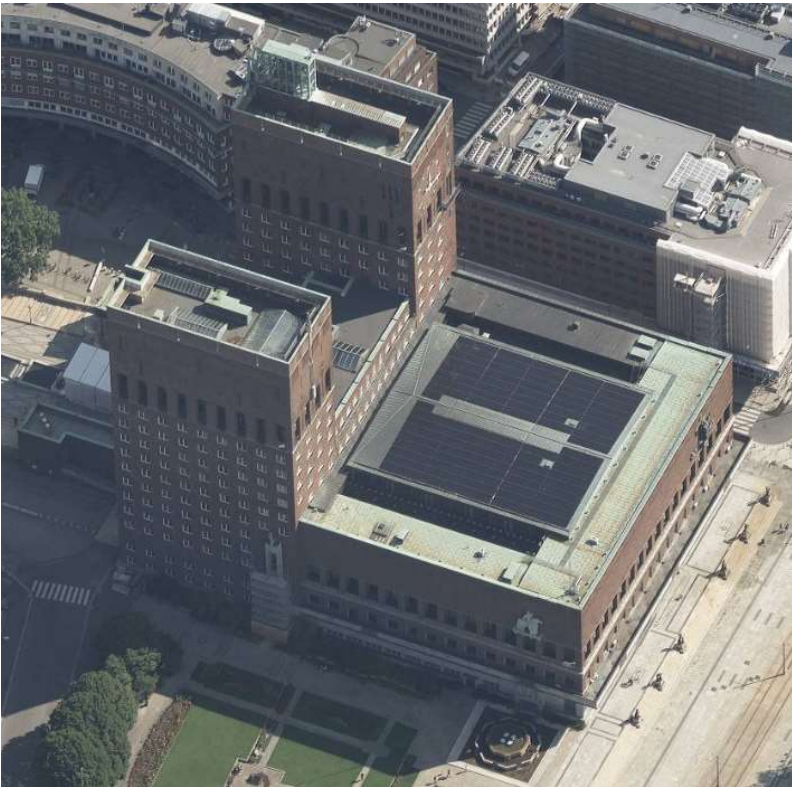
Oslo

09.03.2025

10

Contemporary challenges

Energy reduction



Added insulation

Solar power

District heating

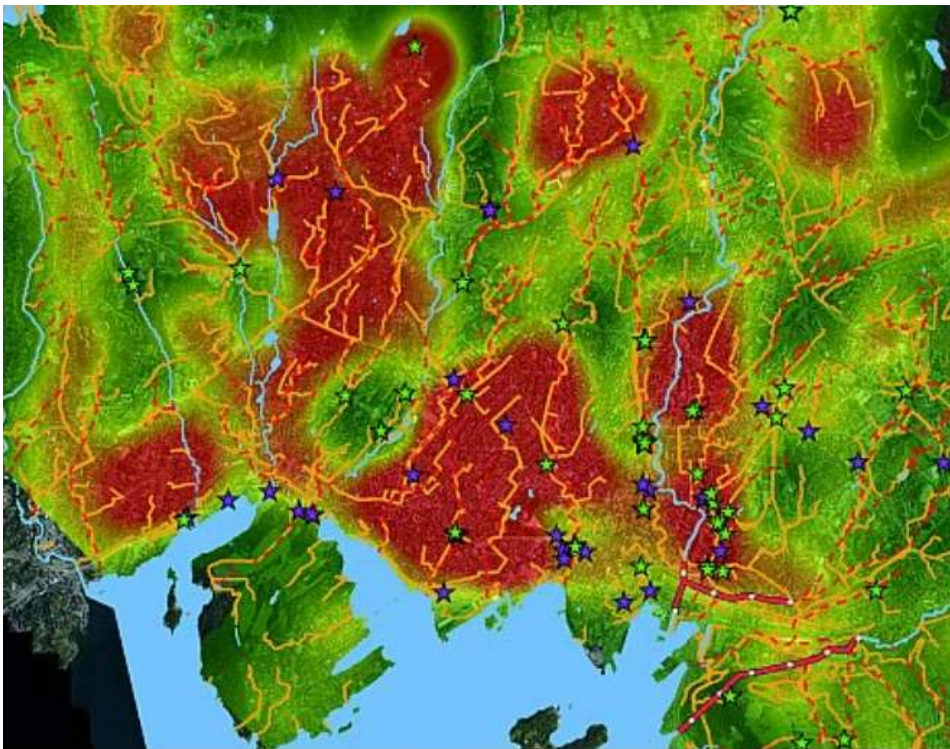
Heat pump



Oslo

Contemporary challenges

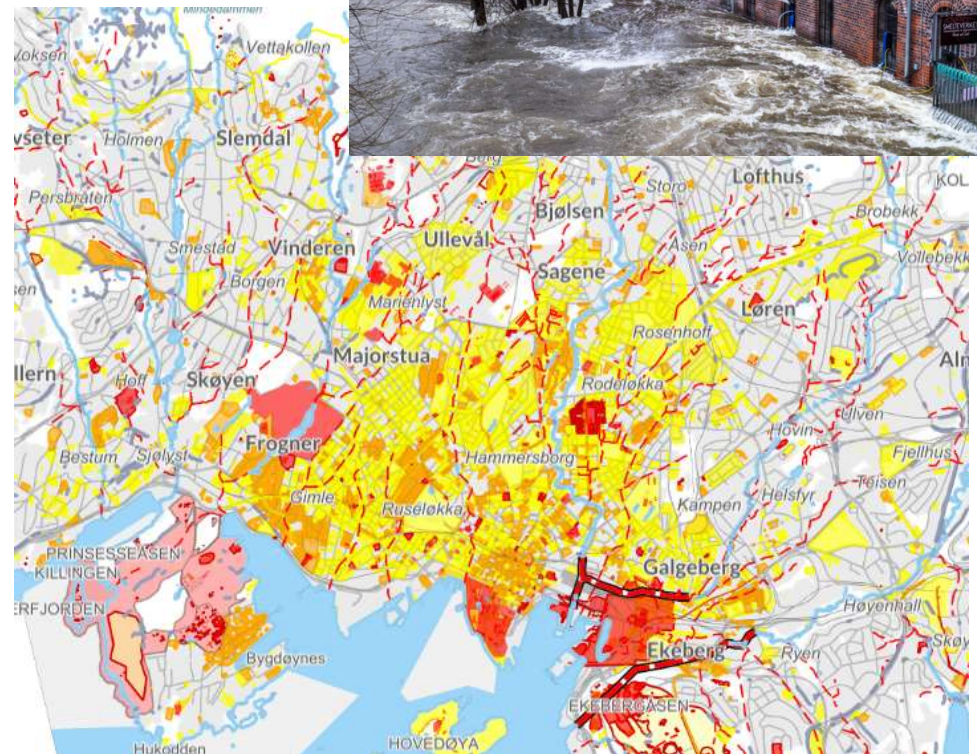
Flash flooding



Documented damage and insurance claims due to flash flooding



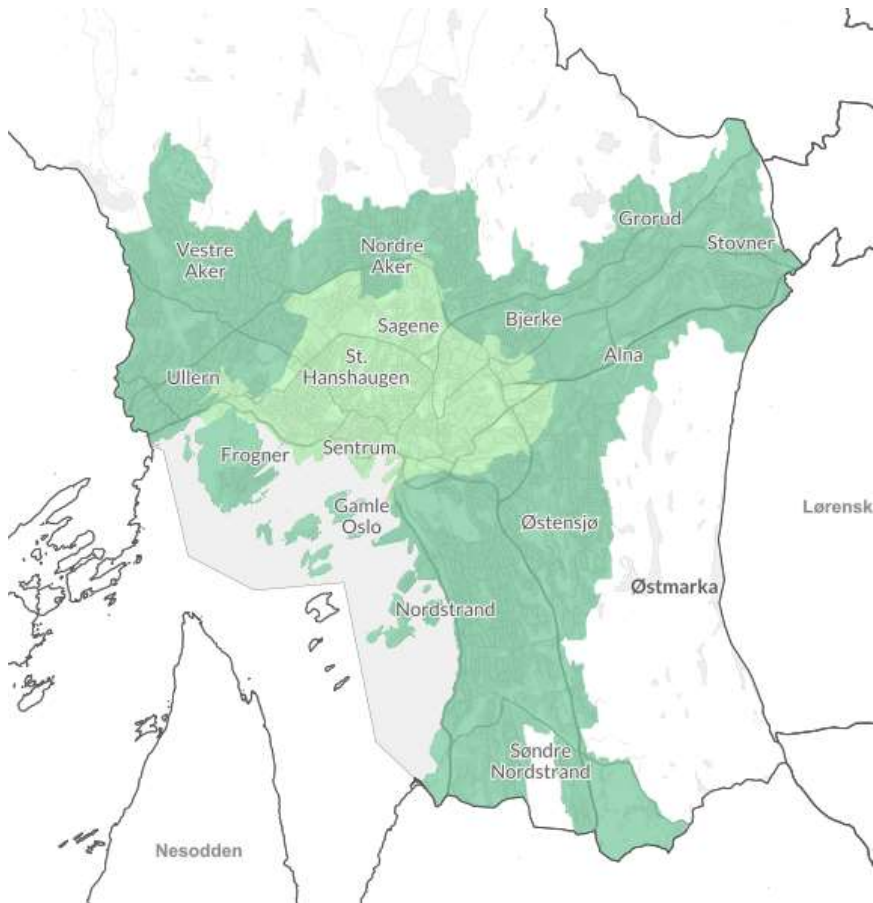
Oslo



Map of listed cultural heritage and open (blue) and covered (red) rivers and streams



Municipal policy; infiltrate, delay, provide safe flood paths



Oslo

Goal

- Separate all storm water from wastewater
- Infiltrate and delay all storm water locally
- Use it both as a blue-green quality to the city, and to curb the decline in biodiversity

Outer city:

Relatively easy to infiltrate and delay floodwater



Inner city

Green roofs

Green walls

Water tanks

Streets with

- permeable paving
- overflow beds
- trees

