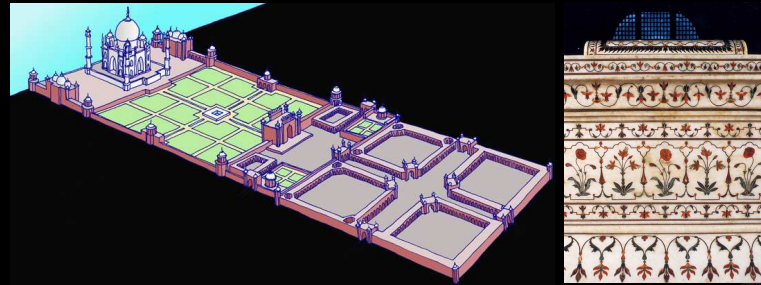


merhaba

management and values

Taj Mahal

1983



© Christopher Pound 2007

Mardin



© Christopher Pound 2007

Mardin



© Christopher Pound 2007

Mardin



© Christopher Pound 2007

Mardin

features	values
• baraka	(i) masterpiece / creative / ger
• ancient city	(ii) interchange human values
• trade route	(iii) cultural tradition / civilizatio
• centre for trade	(iv) architecture / town planning
• multi faith city	(v) traditional human settlemer
• Cyriac Orthodox	(vi) intangible / traditions / belie
• early mosque	
• regional architecture	
• pilgrimage	

© Christopher Pound 2007

Røros

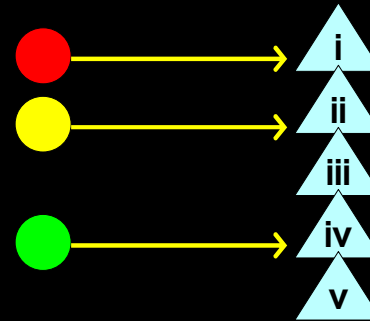


Røros: values

- sustainable town (i) masterpiece / creative genius
- economic centre (ii) interchange human values
- 18th C smelting works
 - traditional architecture (iii) cultural tradition / civilization
 - Northern Renaissance (iv) architecture / town planning
 - (v) traditional human settlement
- independent Community (vi) intangible / traditions / beliefs



outstanding value

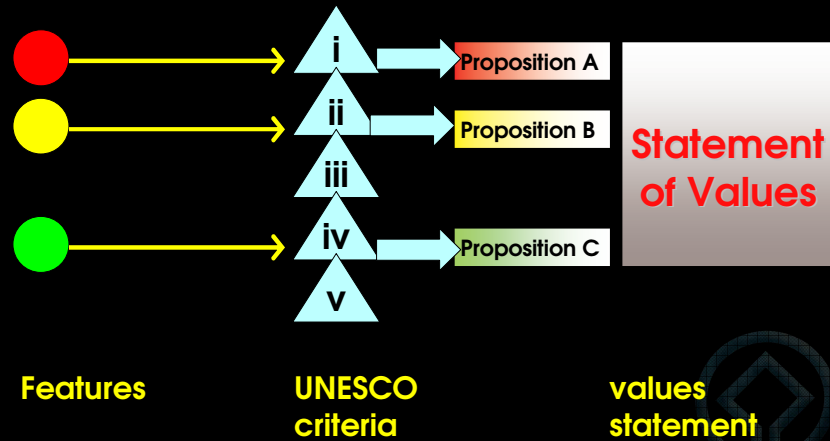


Features

UNESCO
criteria

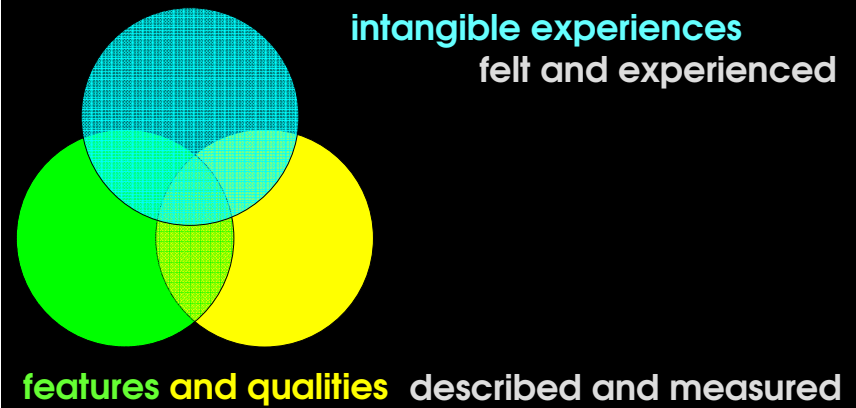


outstanding value



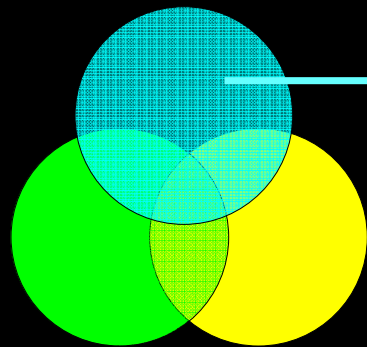
© Christopher Pound 2007

outstanding value



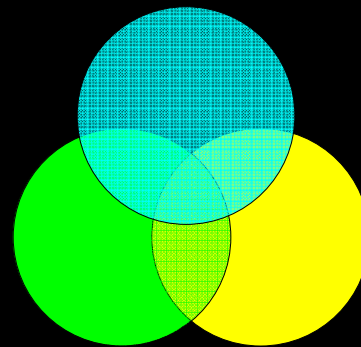
© Christopher Pound 2009

outstanding value

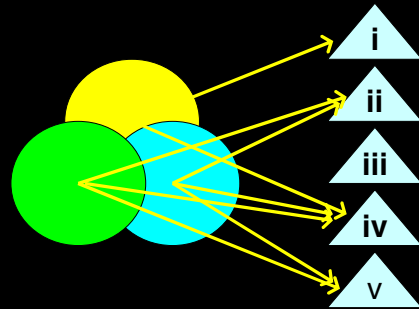


→ intangible values
spiritual places
icons and symbols
emotional responses

outstanding value



outstanding value



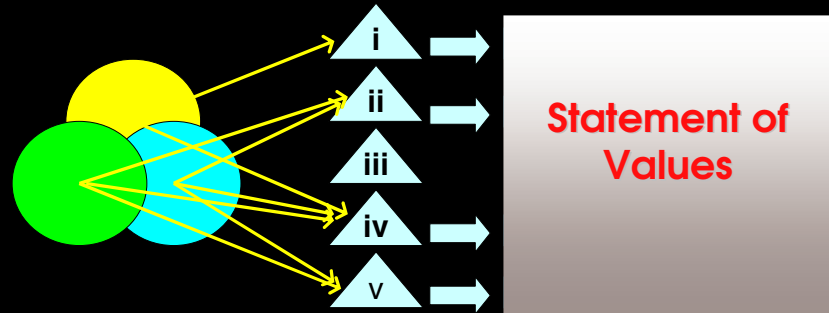
Features qualities
and experiences

UNESCO
criteria



© Christopher Pound 2007

outstanding value



Features qualities
and experiences

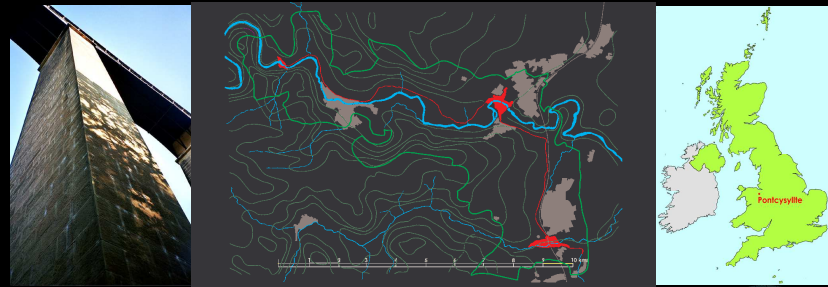
UNESCO
criteria

values
statement



© Christopher Pound 2007

Pontcysyllte Aqueduct



© Christopher Pound 2007



Pontcysyllte Aqueduct



© Christopher Pound 2007

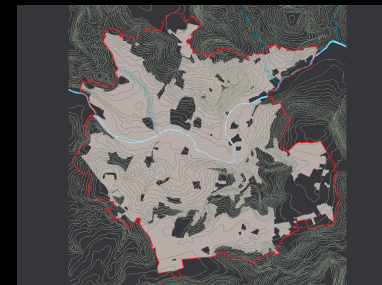


Pontcysyllte Aqueduct

features (described)	qualities (measured)	experience (felt)	UNESCO criteria	Response to key words in each criterion	Proposition
aqueducts	→ high / long		Criterion (i)	a masterpiece work of human genius	Yes Proposition A
embankment	→ long		Criterion (ii)	important interchange of human values - ie. influence over a span of time or within a cultural area of the world developments in architecture/technology	Yes Proposition B
canal	→ outstanding				Yes
tunnels	→ outstanding		Criterion (iii)	unique or exceptional testimony to cultural tradition or civilisation which is living or which has disappeared	No
early use of iron	→ influential	'wow' factor			Yes Proposition C
empirical design	→ influential	sublime	Criterion (iv)	outstanding example of architectural or technological ensemble illustrates a significant stage in human history	Yes
high piers	→ influential	landmark	Criterion (v)	outstanding example of traditional human settlement, land use or representative of a culture	No
clever design		romanticism			Yes Proposition D
make a picture		memorable	Criterion (vi)	'directly or tangibly associated with events or living tradition, with ideas, or with beliefs, with artistic and literary works of outstanding universal significance'	
		master craftsmen			

© Christopher Pound 2007

City of Bath



© Christopher Pound 2007

City of Bath



© Christopher Pound 2007



City of Bath

A Hot Springs

B sacred spring

C healing

D 18th C spa

E landscape

F Enlightenment

G 20th Century

(i) masterpiece

(ii) interchange of human values

(iv) architecture / town planning

© Christopher Pound 2007



City of Bath

A **Hotsprings**

B sacred spring

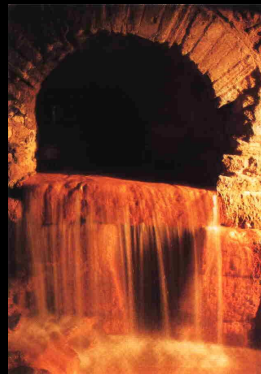
C healing

D 18th C spa

E landscape

F Enlightenment

G 20th Century



© Christopher Pound 2007

City of Bath

A Hotsprings

B **sacred spring**

C healing

D 18th C spa

E landscape

F Enlightenment

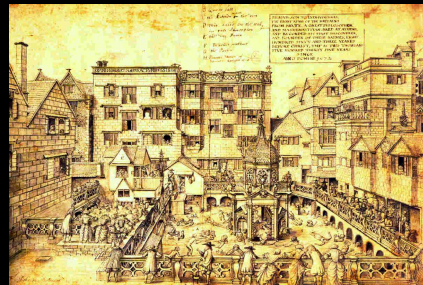
G 20th Century



© Christopher Pound 2007

City of Bath

- A Hotsprings
- B sacred spring
- C healing**
- D 18th C spa
- E landscape
- F Enlightenment
- G 20th Century



© Christopher Pound 2007

City of Bath

- A Hotsprings
- B sacred spring
- C healing
- D 18th C spa**
- E landscape
- F Enlightenment
- G 20th Century



© Christopher Pound 2007

City of Bath

- A Hotsprings
- B sacred spring
- C healing
- D 18th C spa
- E landscape**
- F Enlightenment
- G 20th Century



© Christopher Pound 2007

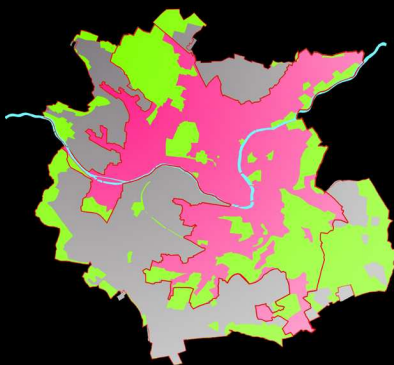
City of Bath

- A Hotsprings
- B sacred spring
- C healing
- D 18th C spa
- E landscape
- F Enlightenment**
- G 20th Century



© Christopher Pound 2007

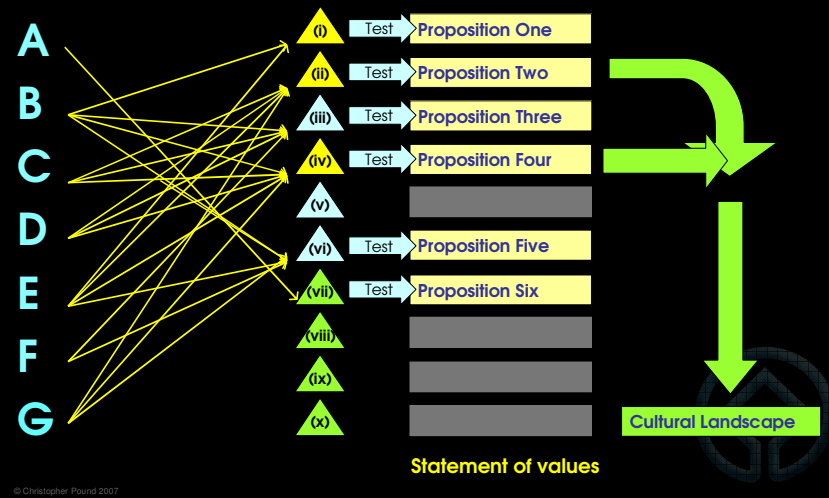
City of Bath



G 20th Century

© Christopher Pound 2007

City of Bath



© Christopher Pound 2007

management plans



© Christopher Pound 2009

management plans



... protect the intangible?

© Christopher Pound 2009

management plans

UNESCO obligations

- q Identification
- q Protection
- q Conservation
- q Presentation
- q Education



management plans

Management Plan



- q Identification
- q Protection
- q Conservation
- q Presentation
- q Education

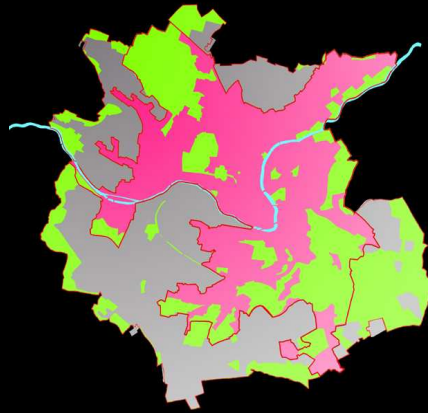


management plans

Management Plan



- q Identification
- q Protection
- q Conservation
- q Presentation
- q Education



management plans

Management Plan



- q Identification
- q Protection
- q Conservation
- q Presentation
- q Education



management plans

Management Plan



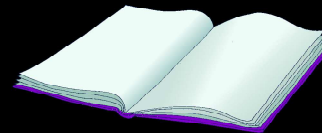
- q Identification
- q Protection
- q **Conservation**
- q Presentation
- q Education



© Christopher Pound 2009

management plans

Management Plan



- q Identification
- q Protection
- q Conservation
- q **Presentation**
- q Education



© Christopher Pound 2009

management plans

Management Plan



- q Identification
- q Protection
- q Conservation
- q Presentation
- q Education



© Christopher Pound 2009

management plans



© Christopher Pound 2009

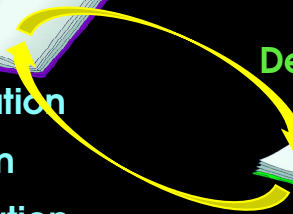
management plans

Management Plan



- q Identification
- q Protection
- q Conservation
- q Presentation
- q Education

Development Plan



© Christopher Pound 2009



thank you